

Datasheet for ABIN5537274  
**anti-PAX6 antibody (AA 183-210)**



[Go to Product page](#)

3 Images

## Overview

Quantity:	400 µL
Target:	PAX6
Binding Specificity:	AA 183-210
Reactivity:	Human
Host:	Rabbit
Clonality:	Polyclonal
Conjugate:	This PAX6 antibody is un-conjugated
Application:	Western Blotting (WB), Immunofluorescence (IF), Flow Cytometry (FACS), Immunohistochemistry (Paraffin-embedded Sections) (IHC (p))

## Product Details

Immunogen:	This PAX6 antibody is generated from rabbits immunized with a KLH conjugated synthetic peptide between 183-210 amino acids from the Central region of human PAX6.
Isotype:	Ig Fraction
Purification:	This antibody is purified through a protein A column, followed by peptide affinity purification.

## Target Details

Target:	PAX6
Alternative Name:	PAX6 ( <a href="#">PAX6 Products</a> )
Background:	PAX6 is paired box gene 6, one of many human homologs of the Drosophila melanogaster gene prd. In addition to the hallmark feature of this gene family, a conserved paired box domain, the

## Target Details

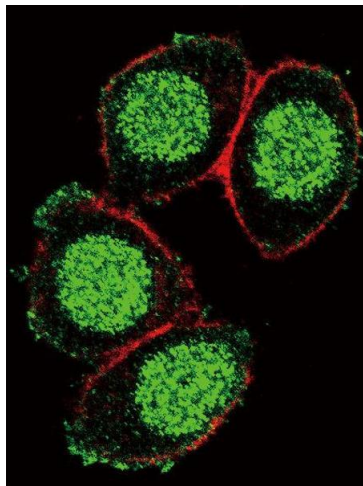
	encoded protein also contains a homeo box domain. Both domains are known to bind DNA, and function as regulators of gene transcription.
Molecular Weight:	47 kDa
Gene ID:	5080
UniProt:	<a href="#">P26367</a>
Pathways:	<a href="#">Peptide Hormone Metabolism</a> , <a href="#">Carbohydrate Homeostasis</a>

## Application Details

Application Notes:	For WB starting dilution is: 1:1000
	For IHC-P starting dilution is: 1:10~50
	For IF starting dilution is: 1:10~50
	For FACS starting dilution is: 1:10~50
Restrictions:	For Research Use only

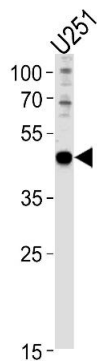
## Handling

Format:	Liquid
Concentration:	0.41 mg/mL
Buffer:	Supplied in PBS with 0.09 % (W/V) sodium azide.
Preservative:	Sodium azide
Precaution of Use:	This product contains Sodium azide: a POISONOUS AND HAZARDOUS SUBSTANCE which should be handled by trained staff only.
Storage:	4 °C, -20 °C
Storage Comment:	Store at 4°C for three months and -20°C, stable for up to one year. As with all antibodies care should be taken to avoid repeated freeze thaw cycles. Antibodies should not be exposed to prolonged high temperatures.



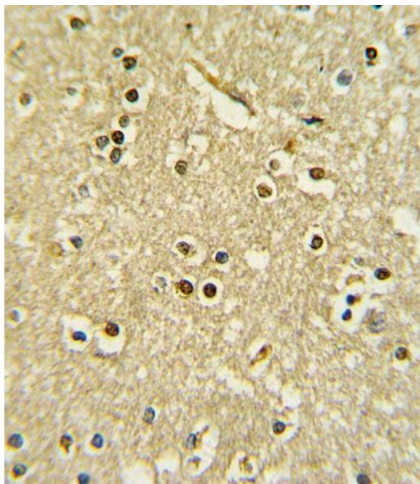
### Immunofluorescence

**Image 1.** Confocal immunofluorescent analysis of PAX6 Antibody with Hela cell followed by Alexa Fluor 488-conjugated goat anti-rabbit IgG (green). Actin filaments have been labeled with Alexa Fluor 555 phalloidin (red).



### Western Blotting

**Image 2.** Western blot analysis in U251 cell line lysates (35ug/lane).



### Immunohistochemistry

**Image 3.** Formalin-fixed and paraffin-embedded human brain tissue with PAX6 Antibody , which was peroxidase-conjugated to the secondary antibody, followed by DAB staining.