

Datasheet for ABIN5537325
anti-PITX2 antibody (AA 122-151)



[Go to Product page](#)

2 Images

Overview

Quantity:	400 µL
Target:	PITX2
Binding Specificity:	AA 122-151
Reactivity:	Human
Host:	Rabbit
Clonality:	Polyclonal
Conjugate:	This PITX2 antibody is un-conjugated
Application:	Western Blotting (WB), Immunofluorescence (IF)

Product Details

Immunogen:	This PITX2 antibody is generated from rabbits immunized with a KLH conjugated synthetic peptide between 122-151 amino acids of human PITX2.
Isotype:	Ig Fraction
Purification:	This antibody is purified through a protein A column, followed by peptide affinity purification.

Target Details

Target:	PITX2
Alternative Name:	PITX2 (PITX2 Products)
Background:	Pitx2 is a member of the RIEG/PITX homeobox family, which is in the bicoid class of homeodomain proteins. This protein acts as a transcription factor and regulates procollagen lysyl hydroxylase gene expression. It plays a role in the terminal differentiation of somatotroph

Target Details

and lactotroph cell phenotypes, is involved in the development of the eye, tooth and abdominal organs, and acts as a transcriptional regulator involved in basal and hormone-regulated activity of prolactin. Mutations in this protein are associated with Axenfeld-Rieger syndrome, iridogoniodysgenesis syndrome, and sporadic cases of Peters anomaly. A similar protein in other vertebrates is involved in the determination of left-right asymmetry during development.

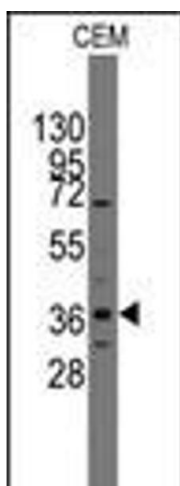
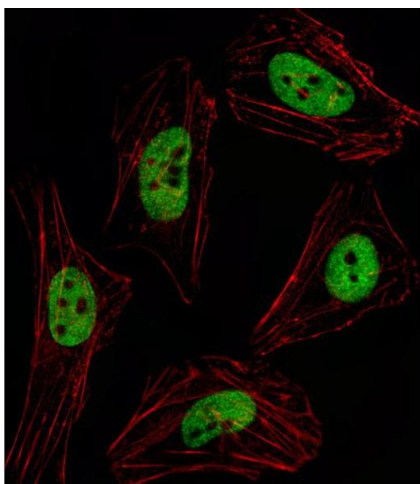
Molecular Weight:	35 kDa
Gene ID:	5308
UniProt:	Q99697
Pathways:	Retinoic Acid Receptor Signaling Pathway , Regulation of Muscle Cell Differentiation , Skeletal Muscle Fiber Development

Application Details

Application Notes:	For IF starting dilution is: 1:10~50 For WB starting dilution is: 1:1000
Restrictions:	For Research Use only

Handling

Format:	Liquid
Concentration:	0.35 mg/mL
Buffer:	Supplied in PBS with 0.09 % (W/V) sodium azide.
Preservative:	Sodium azide
Precaution of Use:	This product contains Sodium azide: a POISONOUS AND HAZARDOUS SUBSTANCE which should be handled by trained staff only.
Storage:	4 °C, -20 °C
Storage Comment:	Store at 4°C for three months and -20°C, stable for up to one year. As with all antibodies care should be taken to avoid repeated freeze thaw cycles. Antibodies should not be exposed to prolonged high temperatures.



Immunofluorescence

Image 1. Fluorescent image of HeLa cell stained with PITX2 Antibody .HeLa cells were fixed with 4% PFA (20 min), permeabilized with Triton X-100 (0.1%, 10 min), then incubated with PITX2 primary antibody (1:25). For secondary antibody, Alexa Fluor 488 conjugated donkey anti-rabbit antibody (green) was used (1:400).Cytoplasmic actin was counterstained with Alexa Fluor 555 (red) conjugated Phalloidin (7units/ml).PITX2 immunoreactivity is localized to Nucleus significantly.

Western Blotting

Image 2. Western blot analysis of anti-Pitx2 Pab in CEM cell line lysates (35ug/lane).