

Datasheet for ABIN5537360
anti-PRPS2 antibody (AA 77-106)[Go to Product page](#)

2 Images

Overview

Quantity:	400 µL
Target:	PRPS2
Binding Specificity:	AA 77-106
Reactivity:	Human
Host:	Rabbit
Clonality:	Polyclonal
Conjugate:	This PRPS2 antibody is un-conjugated
Application:	Western Blotting (WB)

Product Details

Immunogen:	This PRPS2 antibody is generated from rabbits immunized with a KLH conjugated synthetic peptide between 77-106 amino acids from the Central region of human PRPS2.
Isotype:	Ig Fraction
Purification:	This antibody is purified through a protein A column, followed by peptide affinity purification.

Target Details

Target:	PRPS2
Alternative Name:	PRPS2 (PRPS2 Products)
Background:	PRPS2 is a phosphoribosyl pyrophosphate synthetase that plays a central role in the synthesis of purines and pyrimidines. The encoded protein catalyzes the synthesis of 5-phosphoribosyl 1-pyrophosphate from ATP and D-ribose 5-phosphate. Alternate splicing results in multiple

Target Details

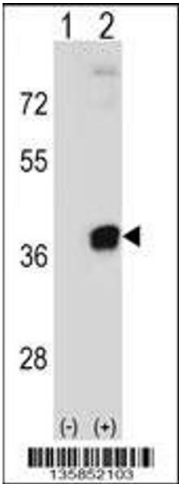
	transcript variants.
Molecular Weight:	35 kDa
Gene ID:	5634
UniProt:	P11908
Pathways:	Ribonucleoside Biosynthetic Process

Application Details

Application Notes:	For WB starting dilution is: 1:1000
Restrictions:	For Research Use only

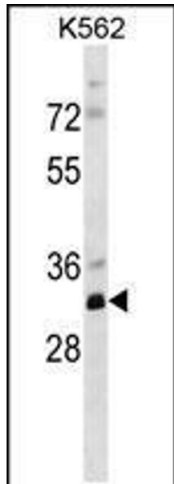
Handling

Format:	Liquid
Concentration:	0.5 mg/mL
Buffer:	Supplied in PBS with 0.09 % (W/V) sodium azide.
Preservative:	Sodium azide
Precaution of Use:	This product contains Sodium azide: a POISONOUS AND HAZARDOUS SUBSTANCE which should be handled by trained staff only.
Storage:	4 °C,-20 °C
Storage Comment:	Store at 4°C for three months and -20°C, stable for up to one year. As with all antibodies care should be taken to avoid repeated freeze thaw cycles. Antibodies should not be exposed to prolonged high temperatures.



Western Blotting

Image 1. Western blot analysis of PRPS2 using rabbit polyclonal PRPS2 Antibody using 293 cell lysates (2 ug/lane) either nontransfected (Lane 1) or transiently transfected (Lane 2) with the PRPS2 gene.



Western Blotting

Image 2. Western blot analysis in K562 cell line lysates (35ug/lane).