

Datasheet for ABIN5537362
anti-SNAPC1 antibody (AA 139-168)[Go to Product page](#)

2 Images

Overview

Quantity:	400 µL
Target:	SNAPC1
Binding Specificity:	AA 139-168
Reactivity:	Human
Host:	Rabbit
Clonality:	Polyclonal
Application:	Western Blotting (WB)

Product Details

Immunogen:	This SNAPC1 antibody is generated from rabbits immunized with a KLH conjugated synthetic peptide between 139-168 amino acids from the Central region of human SNAPC1.
Isotype:	Ig Fraction
Purification:	This antibody is purified through a protein A column, followed by peptide affinity purification.

Target Details

Target:	SNAPC1
Alternative Name:	SNAPC1 (SNAPC1 Products)
Background:	Part of the SNAPc complex required for the transcription of both RNA polymerase II and III small-nuclear RNA genes. Binds to the proximal sequence element (PSE), a non-TATA-box basal promoter element common to these 2 types of genes. Recruits TBP and BRF2 to the U6 snRNA TATA box.

Target Details

Molecular Weight:	43 kDa
Gene ID:	6617
UniProt:	Q16533

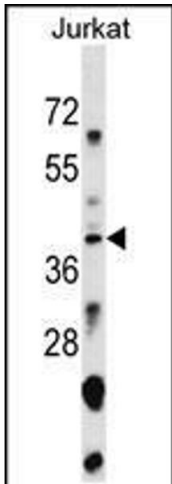
Application Details

Application Notes:	For WB starting dilution is: 1:1000
Restrictions:	For Research Use only

Handling

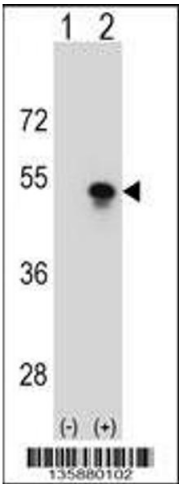
Format:	Liquid
Concentration:	0.5 mg/mL
Buffer:	Supplied in PBS with 0.09 % (W/V) sodium azide.
Preservative:	Sodium azide
Precaution of Use:	This product contains Sodium azide: a POISONOUS AND HAZARDOUS SUBSTANCE which should be handled by trained staff only.
Storage:	4 °C,-20 °C
Storage Comment:	Store at 4°C for three months and -20°C, stable for up to one year. As with all antibodies care should be taken to avoid repeated freeze thaw cycles. Antibodies should not be exposed to prolonged high temperatures.

Images



Western Blotting

Image 1. Western blot analysis in Jurkat cell line lysates (35ug/lane).



Western Blotting

Image 2. Western blot analysis of SNAPC1 using rabbit polyclonal SNAPC1 Antibody using 293 cell lysates (2 ug/lane) either nontransfected (Lane 1) or transiently transfected (Lane 2) with the SNAPC1 gene.