

Datasheet for ABIN5537393
anti-PNPLA6 antibody (C-Term)



[Go to Product page](#)

1 Image

Overview

Quantity:	400 µL
Target:	PNPLA6
Binding Specificity:	AA 1000-1029, C-Term
Reactivity:	Human
Host:	Rabbit
Clonality:	Polyclonal
Conjugate:	This PNPLA6 antibody is un-conjugated
Application:	Western Blotting (WB)

Product Details

Immunogen:	This PNPLA6 antibody is generated from rabbits immunized with a KLH conjugated synthetic peptide between 1000-1029 amino acids from the C-terminal region of human PNPLA6.
Isotype:	Ig Fraction
Purification:	This antibody is purified through a protein A column, followed by peptide affinity purification.

Target Details

Target:	PNPLA6
Alternative Name:	PNPLA6 (PNPLA6 Products)
Background:	PNPLA6 is a phospholipase that deacetylates intracellular phosphatidylcholine to produce glycerophosphocholine. It is thought to function in neurite outgrowth and process elongation during neuronal differentiation. The protein is anchored to the cytoplasmic face of the

Target Details

endoplasmic reticulum in both neurons and non-neuronal cells. Mutations in this gene result in autosomal recessive spastic paraplegia, and the protein is the target for neurodegeneration induced by organophosphorus compounds and chemical warfare agents. Multiple transcript variants encoding different isoforms have been found for this gene. [provided by RefSeq].

Molecular Weight: 150 kDa

Gene ID: 10908

UniProt: [Q8IY17](#)

Pathways: [Ribonucleoside Biosynthetic Process](#)

Application Details

Application Notes: For WB starting dilution is: 1:1000

Restrictions: For Research Use only

Handling

Format: Liquid

Concentration: 0.5 mg/mL

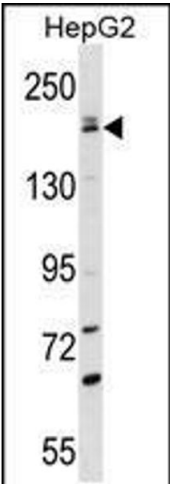
Buffer: Supplied in PBS with 0.09 % (W/V) sodium azide.

Preservative: Sodium azide

Precaution of Use: This product contains Sodium azide: a POISONOUS AND HAZARDOUS SUBSTANCE which should be handled by trained staff only.

Storage: 4 °C,-20 °C

Storage Comment: Store at 4°C for three months and -20°C, stable for up to one year. As with all antibodies care should be taken to avoid repeated freeze thaw cycles. Antibodies should not be exposed to prolonged high temperatures.



Western Blotting

Image 1. Western blot analysis in HepG2 cell line lysates (35ug/lane).