

Datasheet for ABIN5537394
anti-PELI2 antibody (N-Term)[Go to Product page](#)

1 Image

Overview

Quantity:	400 µL
Target:	PELI2
Binding Specificity:	AA 15-43, N-Term
Reactivity:	Human
Host:	Rabbit
Clonality:	Polyclonal
Conjugate:	This PELI2 antibody is un-conjugated
Application:	Western Blotting (WB)

Product Details

Immunogen:	This PELI2 antibody is generated from rabbits immunized with a KLH conjugated synthetic peptide between 15-43 amino acids from the N-terminal region of human PELI2.
Isotype:	Ig Fraction
Purification:	This antibody is purified through a protein A column, followed by peptide affinity purification.

Target Details

Target:	PELI2
Alternative Name:	PELI2 (PELI2 Products)
Background:	Scaffold protein which probably links Toll-like receptors (TLRs) to basic cellular processes via its interaction with the complex containing IRAK kinases and TRAF6. Can activate the MAP (mitogen activated protein) kinase pathway leading to activation of ELK1. Not required for NF-

Target Details

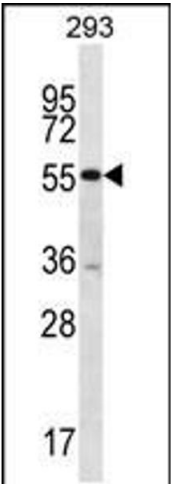
	kappa-B activation.
Molecular Weight:	46 kDa
Gene ID:	57161
UniProt:	Q9HAT8
Pathways:	Activation of Innate immune Response , Toll-Like Receptors Cascades

Application Details

Application Notes:	For WB starting dilution is: 1:1000
Restrictions:	For Research Use only

Handling

Format:	Liquid
Concentration:	0.5 mg/mL
Buffer:	Supplied in PBS with 0.09 % (W/V) sodium azide.
Preservative:	Sodium azide
Precaution of Use:	This product contains Sodium azide: a POISONOUS AND HAZARDOUS SUBSTANCE which should be handled by trained staff only.
Storage:	4 °C,-20 °C
Storage Comment:	Store at 4°C for three months and -20°C, stable for up to one year. As with all antibodies care should be taken to avoid repeated freeze thaw cycles. Antibodies should not be exposed to prolonged high temperatures.



Western Blotting

Image 1. Western blot analysis in 293 cell line lysates (35ug/lane).