



## Datasheet for ABIN5537418 anti-PRLH antibody (C-Term)



[Go to Product page](#)

### 1 Image

#### Overview

Quantity:	400 µL
Target:	PRLH
Binding Specificity:	AA 284-312, C-Term
Reactivity:	Human
Host:	Rabbit
Clonality:	Polyclonal
Conjugate:	This PRLH antibody is un-conjugated
Application:	Western Blotting (WB)

#### Product Details

Immunogen:	This PRLHR antibody is generated from rabbits immunized with a KLH conjugated synthetic peptide between 284-312 amino acids from the C-terminal region of human PRLHR.
Isotype:	Ig Fraction
Purification:	This antibody is purified through a protein A column, followed by peptide affinity purification.

#### Target Details

Target:	PRLH
Alternative Name:	PRLH ( <a href="#">PRLH Products</a> )
Background:	PRLHR is a 7-transmembrane domain receptor for prolactin-releasing hormone (PRLH, MIM 602663) that is highly expressed in anterior pituitary (Ozawa et al., 2002 [PubMed 11923475]).

## Target Details

---

Molecular Weight:	41 kDa
Gene ID:	2834
UniProt:	<a href="#">P49683</a>
Pathways:	<a href="#">Hormone Activity</a> , <a href="#">Feeding Behaviour</a>

## Application Details

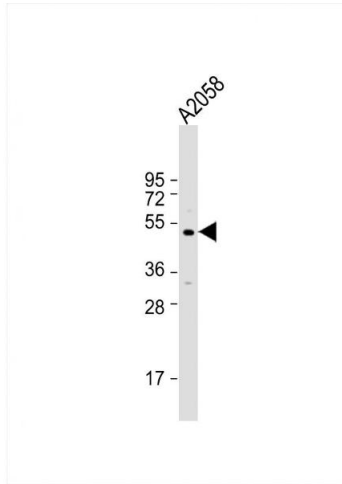
---

Application Notes:	For WB starting dilution is: 1:1000
Restrictions:	For Research Use only

## Handling

---

Format:	Liquid
Concentration:	0.44 mg/mL
Buffer:	Supplied in PBS with 0.09 % (W/V) sodium azide.
Preservative:	Sodium azide
Precaution of Use:	This product contains Sodium azide: a POISONOUS AND HAZARDOUS SUBSTANCE which should be handled by trained staff only.
Storage:	4 °C,-20 °C
Storage Comment:	Store at 4°C for three months and -20°C, stable for up to one year. As with all antibodies care should be taken to avoid repeated freeze thaw cycles. Antibodies should not be exposed to prolonged high temperatures.



### Western Blotting

**Image 1.** Western Blot at 1:1000 dilution + A2058 whole cell lysate Lysates/proteins at 20 ug per lane.