



[Go to Product page](#)

Datasheet for ABIN5537419  
**anti-PRR7 antibody (C-Term)**

1 Image

Overview

Quantity:	400 µL
Target:	PRR7
Binding Specificity:	AA 171-199, C-Term
Reactivity:	Human
Host:	Rabbit
Clonality:	Polyclonal
Conjugate:	This PRR7 antibody is un-conjugated
Application:	Western Blotting (WB)

Product Details

Immunogen:	This PRR7 antibody is generated from rabbits immunized with a KLH conjugated synthetic peptide between 171-199 amino acids from the C-terminal region of human PRR7.
Isotype:	Ig Fraction
Purification:	This antibody is purified through a protein A column, followed by peptide affinity purification.

Target Details

Target:	PRR7
Alternative Name:	PRR7 ( <a href="#">PRR7 Products</a> )
Background:	Found in a postsynaptic membrane complex with DLG4 and GRIN1. Interacts with DLG4. Interacts preferentially to the PDZ3 domain of DLG4 and to lesser degree to PDZ2 but not to the PDZ1.

## Target Details

Molecular Weight: 31 kDa

Gene ID: 80758

UniProt: [Q8TB68](#)

## Application Details

Application Notes: For WB starting dilution is: 1:1000

Restrictions: For Research Use only

## Handling

Format: Liquid

Concentration: 0.5 mg/mL

Buffer: Supplied in PBS with 0.09 % (W/V) sodium azide.

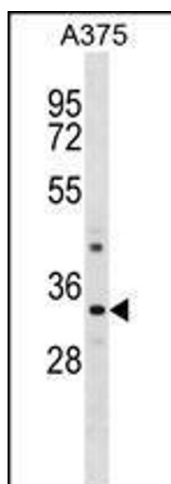
Preservative: Sodium azide

Precaution of Use: This product contains Sodium azide: a POISONOUS AND HAZARDOUS SUBSTANCE which should be handled by trained staff only.

Storage: 4 °C, -20 °C

Storage Comment: Store at 4°C for three months and -20°C, stable for up to one year. As with all antibodies care should be taken to avoid repeated freeze thaw cycles. Antibodies should not be exposed to prolonged high temperatures.

## Images



### Western Blotting

**Image 1.** Western blot analysis in A375 cell line lysates (35ug/lane).