

Datasheet for ABIN5537430
anti-TRA2B antibody (AA 208-237)[Go to Product page](#)

2 Images

Overview

| | |
|----------------------|--|
| Quantity: | 400 µL |
| Target: | TRA2B |
| Binding Specificity: | AA 208-237 |
| Reactivity: | Human |
| Host: | Rabbit |
| Clonality: | Polyclonal |
| Conjugate: | This TRA2B antibody is un-conjugated |
| Application: | Western Blotting (WB), Immunohistochemistry (Paraffin-embedded Sections) (IHC (p)) |

Product Details

| | |
|---------------|---|
| Immunogen: | This TRA2B antibody is generated from rabbits immunized with a KLH conjugated synthetic peptide between 208-237 amino acids from the Central region of human TRA2B. |
| Isotype: | Ig Fraction |
| Purification: | This antibody is purified through a protein A column, followed by peptide affinity purification. |

Target Details

| | |
|-------------------|--|
| Target: | TRA2B |
| Alternative Name: | TRA2B (TRA2B Products) |
| Background: | TRA2B is a sequence-specific RNA-binding protein which participates in the control of pre-mRNA splicing. |

Target Details

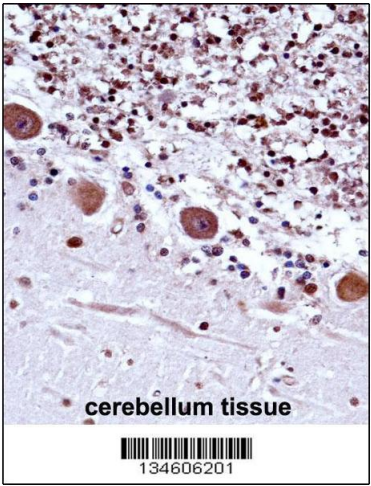
| | |
|-------------------|------------------------|
| Molecular Weight: | 34 kDa |
| Gene ID: | 6434 |
| UniProt: | P62995 |

Application Details

| | |
|--------------------|--|
| Application Notes: | For WB starting dilution is: 1:1000 For IHC-P starting dilution is: 1:10~50 |
| Restrictions: | For Research Use only |

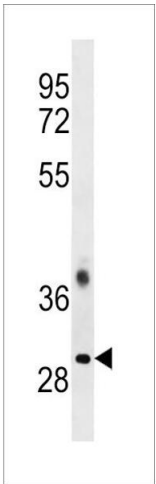
Handling

| | |
|--------------------|--|
| Format: | Liquid |
| Concentration: | 0.42 mg/mL |
| Buffer: | Supplied in PBS with 0.09 % (W/V) sodium azide. |
| Preservative: | Sodium azide |
| Precaution of Use: | This product contains Sodium azide: a POISONOUS AND HAZARDOUS SUBSTANCE which should be handled by trained staff only. |
| Storage: | 4 °C,-20 °C |
| Storage Comment: | Store at 4°C for three months and -20°C, stable for up to one year. As with all antibodies care should be taken to avoid repeated freeze thaw cycles. Antibodies should not be exposed to prolonged high temperatures. |



Immunohistochemistry

Image 1. TRA2B Antibody immunohistochemistry analysis in formalin fixed and paraffin embedded human cerebellum tissue followed by peroxidase conjugation of the secondary antibody and DAB staining.



Western Blotting

Image 2. Western blot analysis in CEM cell line lysates (35ug/lane).