

Datasheet for ABIN5537478
anti-PDE8A antibody (AA 557-587)[Go to Product page](#)

2 Images

Overview

Quantity:	400 µL
Target:	PDE8A
Binding Specificity:	AA 557-587
Reactivity:	Human
Host:	Rabbit
Clonality:	Polyclonal
Conjugate:	This PDE8A antibody is un-conjugated
Application:	Western Blotting (WB), Immunohistochemistry (Paraffin-embedded Sections) (IHC (p))

Product Details

Immunogen:	This PDE8A antibody is generated from rabbits immunized with a KLH conjugated synthetic peptide between 557-587 amino acids from the Central region of human PDE8A.
Isotype:	Ig Fraction
Purification:	This antibody is prepared by Saturated Ammonium Sulfate (SAS) precipitation followed by dialysis

Target Details

Target:	PDE8A
Alternative Name:	PDE8A (PDE8A Products)
Background:	PDE8A plays a role in signal transduction by regulating the intracellular concentration of cyclic nucleotides. This phosphodiesterase, which has a high affinity for cAMP, may be involved in

Target Details

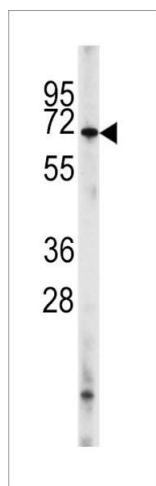
	maintaining basal levels of the cyclic nucleotide and/or in the cAMP regulation of germ cell development.
Molecular Weight:	93 kDa
Gene ID:	5151
UniProt:	O60658
Pathways:	cAMP Metabolic Process

Application Details

Application Notes:	For WB starting dilution is: 1:1000
	For IHC-P starting dilution is: 1:50
Restrictions:	For Research Use only

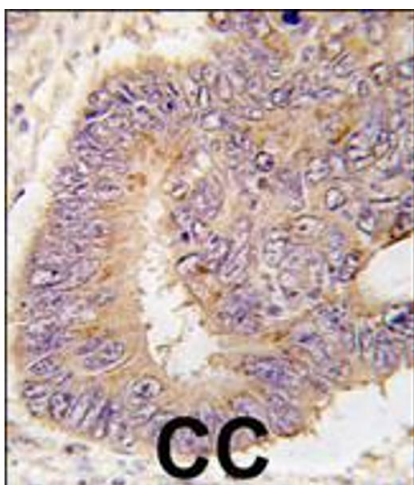
Handling

Format:	Liquid
Concentration:	2 mg/mL
Buffer:	Supplied in PBS with 0.09 % (W/V) sodium azide.
Preservative:	Sodium azide
Precaution of Use:	This product contains Sodium azide: a POISONOUS AND HAZARDOUS SUBSTANCE which should be handled by trained staff only.
Storage:	4 °C,-20 °C
Storage Comment:	Store at 4°C for three months and -20°C, stable for up to one year. As with all antibodies care should be taken to avoid repeated freeze thaw cycles. Antibodies should not be exposed to prolonged high temperatures.



Western Blotting

Image 1. Western blot analysis of PDE8A Antibody (L572) in HL60 cell line lysates (35ug/lane)



Immunohistochemistry

Image 2. Formalin-fixed and paraffin-embedded human colon carcinoma tissue reacted with PDE8A antibody (L572), which was peroxidase-conjugated to the secondary antibody, followed by DAB staining.