

Datasheet for ABIN5537498  
**anti-SCYL2 antibody (AA 585-613)**[Go to Product page](#)

## 2 Images

## Overview

Quantity:	400 µL
Target:	SCYL2
Binding Specificity:	AA 585-613
Reactivity:	Human, Mouse
Host:	Rabbit
Clonality:	Polyclonal
Conjugate:	This SCYL2 antibody is un-conjugated
Application:	Western Blotting (WB)

## Product Details

Immunogen:	This Mouse Scyl2 antibody is generated from rabbits immunized with a KLH conjugated synthetic peptide between 585-613 amino acids from the Central region of mouse Scyl2.
Isotype:	Ig Fraction
Purification:	This antibody is purified through a protein A column, followed by peptide affinity purification.

## Target Details

Target:	SCYL2
Alternative Name:	Scyl2 ( <a href="#">SCYL2 Products</a> )
Background:	Component of AP2-containing clathrin coated structures at the plasma membrane or of endocytic coated vesicles. Scyl2 may be a serine/threonine-protein kinase. May regulate clathrin-dependent trafficking between the TGN and/or the endosomal system (By similarity),.

## Target Details

Molecular Weight: 103 kDa

Gene ID: 213326

UniProt: [Q8CFE4](#)

## Application Details

Application Notes: For WB starting dilution is: 1:1000

Restrictions: For Research Use only

## Handling

Format: Liquid

Buffer: Supplied in PBS with 0.09 % (W/V) sodium azide.

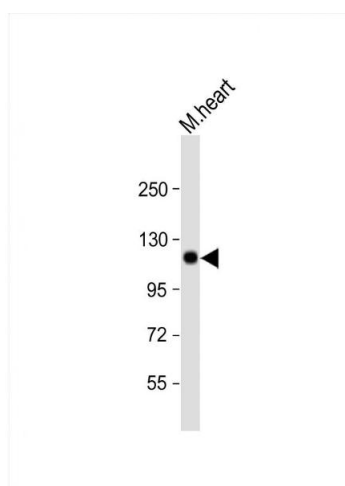
Preservative: Sodium azide

Precaution of Use: This product contains Sodium azide: a POISONOUS AND HAZARDOUS SUBSTANCE which should be handled by trained staff only.

Storage: 4 °C, -20 °C

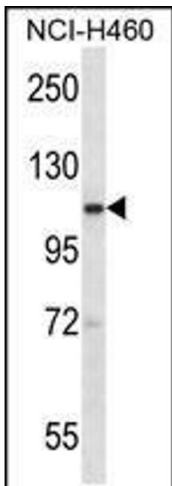
Storage Comment: Store at 4°C for three months and -20°C, stable for up to one year. As with all antibodies care should be taken to avoid repeated freeze thaw cycles. Antibodies should not be exposed to prolonged high temperatures.

## Images



### Western Blotting

**Image 1.** Western Blot at 1:1000 dilution + mouse heart lysate Lysates/proteins at 20 ug per lane.



Western Blotting

**Image 2.** Western blot analysis in NCI-H460 cell line lysates (35ug/lane).