

Datasheet for ABIN5537499
anti-SCYL2 antibody (C-Term)[Go to Product page](#)

2 Images

Overview

Quantity:	400 µL
Target:	SCYL2
Binding Specificity:	AA 643-672, C-Term
Reactivity:	Human, Mouse
Host:	Rabbit
Clonality:	Polyclonal
Conjugate:	This SCYL2 antibody is un-conjugated
Application:	Western Blotting (WB), Immunohistochemistry (Paraffin-embedded Sections) (IHC (p))

Product Details

Immunogen:	This SCYL2 antibody is generated from rabbits immunized with a KLH conjugated synthetic peptide between 643-672 amino acids from the C-terminal region of human SCYL2.
Isotype:	Ig Fraction
Purification:	This antibody is prepared by Saturated Ammonium Sulfate (SAS) precipitation followed by dialysis

Target Details

Target:	SCYL2
Alternative Name:	SCYL2 (SCYL2 Products)
Background:	SCYL2 is a component of AP2-containing clathrin coated structures at the plasma membrane or of endocytic coated vesicles. SCYL2 is a probable serine/threonine-protein kinase that

Target Details

phosphorylates, in vitro, the beta2-subunit of the plasma membrane adapter complex AP2 and other proteins in presence of poly-L-lysine. SCYL2 may also regulate clathrin-dependent trafficking between the TGN and/or the endosomal system.

Molecular Weight: 104 kDa

Gene ID: 55681

UniProt: [Q6P3W7](#)

Application Details

Application Notes: For WB starting dilution is: 1:1000

For IHC-P starting dilution is: 1:10~50

Restrictions: For Research Use only

Handling

Format: Liquid

Concentration: 2 mg/mL

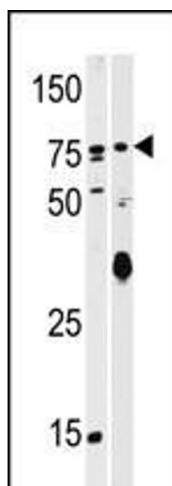
Buffer: Supplied in PBS with 0.09 % (W/V) sodium azide.

Preservative: Sodium azide

Precaution of Use: This product contains Sodium azide: a POISONOUS AND HAZARDOUS SUBSTANCE which should be handled by trained staff only.

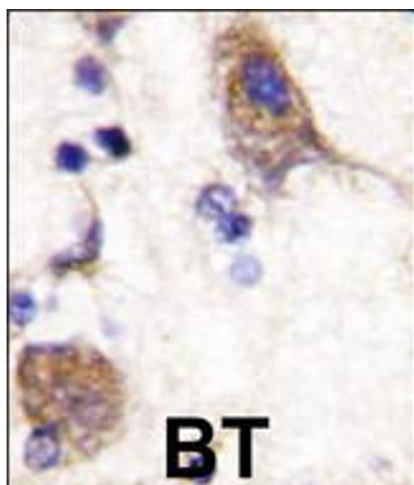
Storage: 4 °C, -20 °C

Storage Comment: Store at 4°C for three months and -20°C, stable for up to one year. As with all antibodies care should be taken to avoid repeated freeze thaw cycles. Antibodies should not be exposed to prolonged high temperatures.



Western Blotting

Image 1. Western blot analysis of anti-SCYL2 Pab (AP7024b) in T47D (left) and mouse brain (right) tissue lysates (35ug/lane).



Immunohistochemistry

Image 2. Formalin-fixed and paraffin-embedded human brain tissue reacted with SCYL2 , which was peroxidase-conjugated to the secondary antibody, followed by DAB staining.