

Datasheet for ABIN5537539  
**anti-SMAD9 antibody (AA 200-228)**[Go to Product page](#)

## 3 Images

## Overview

Quantity:	400 µL
Target:	SMAD9
Binding Specificity:	AA 200-228
Reactivity:	Human
Host:	Rabbit
Clonality:	Polyclonal
Conjugate:	This SMAD9 antibody is un-conjugated
Application:	Western Blotting (WB), Immunofluorescence (IF)

## Product Details

Immunogen:	This SMAD9 antibody is generated from rabbits immunized with a KLH conjugated synthetic peptide between 200-228 amino acids from the Central region of human SMAD9.
Isotype:	Ig Fraction
Purification:	This antibody is purified through a protein A column, followed by peptide affinity purification.

## Target Details

Target:	SMAD9
Alternative Name:	SMAD9 ( <a href="#">SMAD9 Products</a> )
Background:	The protein encoded by this gene is a member of the SMAD family, which transduces signals from TGF-beta family members. The encoded protein is activated by bone morphogenetic proteins and interacts with SMAD4. Two transcript variants encoding different isoforms have

## Target Details

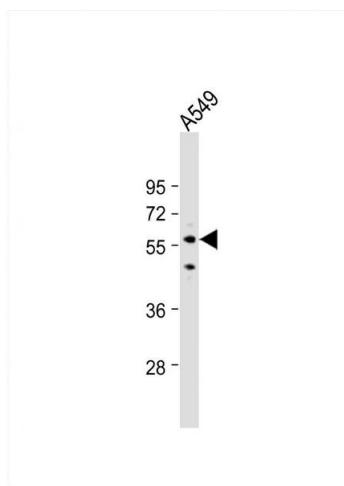
	been found for this gene.
Molecular Weight:	52 kDa
Gene ID:	4093
UniProt:	<a href="#">O15198</a>

## Application Details

Application Notes:	For WB starting dilution is: 1:1000
	For IF starting dilution is: 1:10~50
Restrictions:	For Research Use only

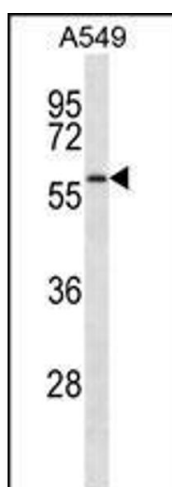
## Handling

Format:	Liquid
Concentration:	0.45 mg/mL
Buffer:	Supplied in PBS with 0.09 % (W/V) sodium azide.
Preservative:	Sodium azide
Precaution of Use:	This product contains Sodium azide: a POISONOUS AND HAZARDOUS SUBSTANCE which should be handled by trained staff only.
Storage:	4 °C, -20 °C
Storage Comment:	Store at 4°C for three months and -20°C, stable for up to one year. As with all antibodies care should be taken to avoid repeated freeze thaw cycles. Antibodies should not be exposed to prolonged high temperatures.



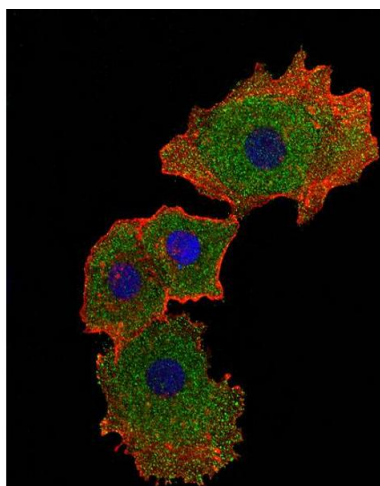
#### Western Blotting

**Image 1.** Western Blot at 1:1000 dilution + A549 whole cell lysate Lysates/proteins at 20 ug per lane.



#### Western Blotting

**Image 2.** Western blot analysis in A549 cell line lysates (35ug/lane).



#### Immunofluorescence

**Image 3.** Fluorescent confocal image of MCF-7 cell stained with SMAD9 Antibody . MCF-7 cells were fixed with 4% PFA (20 min), permeabilized with Triton X-100 (0.1%, 10 min), then incubated with SMAD9 primary antibody (1:25). For secondary antibody, Alexa Fluor 488 conjugated donkey anti-rabbit antibody (green) was used (1:400).Cytoplasmic actin was counterstained with Alexa Fluor 555 (red) conjugated Phalloidin (7units/ml). Nuclei were counterstained with DAPI (blue) (10 ug/ml, 10 min).SMAD9 immunoreactivity is localized to cytoplasm and nucleus significantly.