

Datasheet for ABIN5537577  
**anti-SULT1B1 antibody (C-Term)**

## 2 Images

[Go to Product page](#)

## Overview

Quantity:	400 µL
Target:	SULT1B1
Binding Specificity:	AA 191-219, C-Term
Reactivity:	Human
Host:	Rabbit
Clonality:	Polyclonal
Conjugate:	This SULT1B1 antibody is un-conjugated
Application:	Western Blotting (WB)

## Product Details

Immunogen:	This SULT1B1 antibody is generated from rabbits immunized with a KLH conjugated synthetic peptide between 191-219 amino acids from the C-terminal region of human SULT1B1.
Isotype:	Ig Fraction
Purification:	This antibody is purified through a protein A column, followed by peptide affinity purification.

## Target Details

Target:	SULT1B1
Alternative Name:	SULT1B1 ( <a href="#">SULT1B1 Products</a> )
Background:	Sulfotransferase enzymes catalyze the sulfate conjugation of many hormones, neurotransmitters, drugs, and xenobiotic compounds. These cytosolic enzymes are different in their tissue distributions and substrate specificities. The gene structure (number and length of

## Target Details

exons) is similar among family members. However, the total genomic length of this gene is greater than that of other SULT1 genes.

Molecular Weight: 35 kDa

Gene ID: 27284

UniProt: [O43704](#)

## Application Details

Application Notes: For WB starting dilution is: 1:1000

Restrictions: For Research Use only

## Handling

Format: Liquid

Concentration: 0.5 mg/mL

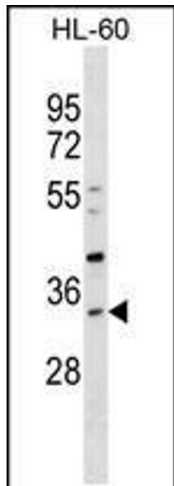
Buffer: Supplied in PBS with 0.09 % (W/V) sodium azide.

Preservative: Sodium azide

Precaution of Use: This product contains Sodium azide: a POISONOUS AND HAZARDOUS SUBSTANCE which should be handled by trained staff only.

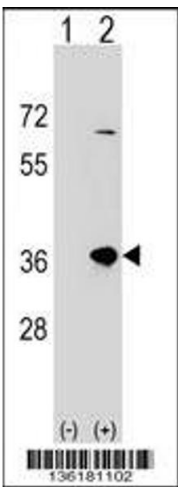
Storage: 4 °C, -20 °C

Storage Comment: Store at 4°C for three months and -20°C, stable for up to one year. As with all antibodies care should be taken to avoid repeated freeze thaw cycles. Antibodies should not be exposed to prolonged high temperatures.



Western Blotting

**Image 1.** Western blot analysis in HL-60 cell line lysates (35ug/lane).



Western Blotting

**Image 2.** Western blot analysis of SULT1B1 using rabbit polyclonal SULT1B1 Antibody using 293 cell lysates (2 ug/lane) either nontransfected (Lane 1) or transiently transfected (Lane 2) with the SULT1B1 gene.