

Datasheet for ABIN5537590

## anti-SAP18 antibody (AA 58-86)



[Go to Product page](#)

### 1 Image

#### Overview

Quantity:	400 µL
Target:	SAP18
Binding Specificity:	AA 58-86
Reactivity:	Human
Host:	Rabbit
Clonality:	Polyclonal
Conjugate:	This SAP18 antibody is un-conjugated
Application:	Western Blotting (WB)

#### Product Details

Immunogen:	This SAP18 antibody is generated from rabbits immunized with a KLH conjugated synthetic peptide between 58-86 amino acids from the Central region of human SAP18.
Isotype:	Ig Fraction
Purification:	This antibody is purified through a protein A column, followed by peptide affinity purification.

#### Target Details

Target:	SAP18
Alternative Name:	SAP18 ( <a href="#">SAP18 Products</a> )
Background:	Histone acetylation plays a key role in the regulation of eukaryotic gene expression. Histone acetylation and deacetylation are catalyzed by multisubunit complexes. The protein encoded by this gene is a component of the histone deacetylase complex, which includes SIN3, SAP30,

## Target Details

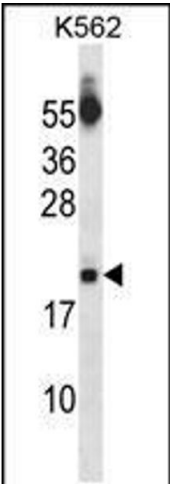
	HDAC1, HDAC2, RbAp46, RbAp48, and other polypeptides. This protein directly interacts with SIN3 and enhances SIN3-mediated transcriptional repression when tethered to the promoter. A pseudogene has been identified on chromosome 2.
Molecular Weight:	18 kDa
Gene ID:	10284
UniProt:	<a href="#">O00422</a>

## Application Details

Application Notes:	For WB starting dilution is: 1:1000
Restrictions:	For Research Use only

## Handling

Format:	Liquid
Concentration:	0.5 mg/mL
Buffer:	Supplied in PBS with 0.09 % (W/V) sodium azide.
Preservative:	Sodium azide
Precaution of Use:	This product contains Sodium azide: a POISONOUS AND HAZARDOUS SUBSTANCE which should be handled by trained staff only.
Storage:	4 °C, -20 °C
Storage Comment:	Store at 4°C for three months and -20°C, stable for up to one year. As with all antibodies care should be taken to avoid repeated freeze thaw cycles. Antibodies should not be exposed to prolonged high temperatures.



Western Blotting

**Image 1.** Western blot analysis in K562 cell line lysates (35ug/lane).