

Datasheet for ABIN5537673

**anti-UBE2Q2 antibody (AA 168-196)**[Go to Product page](#)**1** Image

## Overview

Quantity:	400 µL
Target:	UBE2Q2
Binding Specificity:	AA 168-196
Reactivity:	Human
Host:	Rabbit
Clonality:	Polyclonal
Conjugate:	This UBE2Q2 antibody is un-conjugated
Application:	Western Blotting (WB)

## Product Details

Immunogen:	This UBE2Q2 antibody is generated from rabbits immunized with a KLH conjugated synthetic peptide between 168-196 amino acids from the Central region of human UBE2Q2.
Isotype:	Ig Fraction
Purification:	This antibody is purified through a protein A column, followed by peptide affinity purification.

## Target Details

Target:	UBE2Q2
Alternative Name:	UBE2Q2 ( <a href="#">UBE2Q2 Products</a> )
Background:	UBE2Q2 accepts ubiquitin from the E1 complex and catalyzes its covalent attachment to other proteins. In vitro catalyzes 'Lys-48'-linked polyubiquitination.

## Target Details

Molecular Weight:	43 kDa
Gene ID:	92912
UniProt:	<a href="#">Q8WVN8</a>

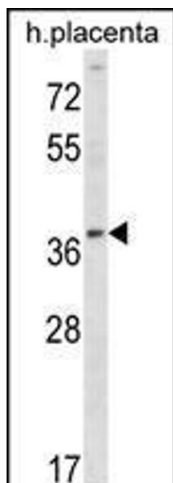
## Application Details

Application Notes:	For WB starting dilution is: 1:1000
Restrictions:	For Research Use only

## Handling

Format:	Liquid
Concentration:	0.5 mg/mL
Buffer:	Supplied in PBS with 0.09 % (W/V) sodium azide.
Preservative:	Sodium azide
Precaution of Use:	This product contains Sodium azide: a POISONOUS AND HAZARDOUS SUBSTANCE which should be handled by trained staff only.
Storage:	4 °C, -20 °C
Storage Comment:	Store at 4°C for three months and -20°C, stable for up to one year. As with all antibodies care should be taken to avoid repeated freeze thaw cycles. Antibodies should not be exposed to prolonged high temperatures.

## Images



### Western Blotting

**Image 1.** Western blot analysis in human placenta tissue lysates (35ug/lane).