



[Go to Product page](#)

Datasheet for ABIN5537708
anti-C5 antibody (N-Term)

3 Images

Overview

| | |
|----------------------|---|
| Quantity: | 400 µL |
| Target: | C5 |
| Binding Specificity: | AA 253-281, N-Term |
| Reactivity: | Human |
| Host: | Rabbit |
| Clonality: | Polyclonal |
| Conjugate: | This C5 antibody is un-conjugated |
| Application: | Western Blotting (WB), Immunohistochemistry (Paraffin-embedded Sections) (IHC (p)), Flow Cytometry (FACS) |

Product Details

| | |
|---------------|--|
| Immunogen: | This C5 antibody is generated from rabbits immunized with a KLH conjugated synthetic peptide between 253-281 amino acids from the N-terminal region of human C5. |
| Isotype: | Ig Fraction |
| Purification: | This antibody is purified through a protein A column, followed by peptide affinity purification. |

Target Details

| | |
|-------------------|--|
| Target: | C5 |
| Alternative Name: | C5 (C5 Products) |
| Background: | C5 is the fifth component of complement, which plays an important role in inflammatory and cell killing processes. This protein is comprised of alpha and beta polypeptide chains that are |

Target Details

linked by a disulfide bridge. An activation peptide, C5a, which is an anaphylatoxin that possesses potent spasmogenic and chemotactic activity, is derived from the alpha polypeptide via cleavage with a convertase. The C5b macromolecular cleavage product can form a complex with the C6 complement component, and this complex is the basis for formation of the membrane attack complex, which includes additional complement components.

Molecular Weight: 188 kDa

Gene ID: 727

UniProt: [P01031](#)

Pathways: [Complement System](#), [Carbohydrate Homeostasis](#)

Application Details

Application Notes: For WB starting dilution is: 1:1000

For IHC-P starting dilution is: 1:50~100

For FACS starting dilution is: 1:10~50

Restrictions: For Research Use only

Handling

Format: Liquid

Concentration: 0.45 mg/mL

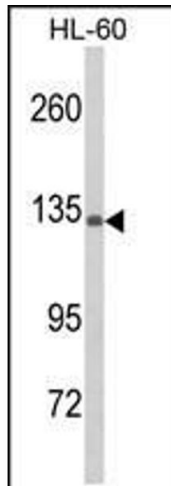
Buffer: Supplied in PBS with 0.09 % (W/V) sodium azide.

Preservative: Sodium azide

Precaution of Use: This product contains Sodium azide: a POISONOUS AND HAZARDOUS SUBSTANCE which should be handled by trained staff only.

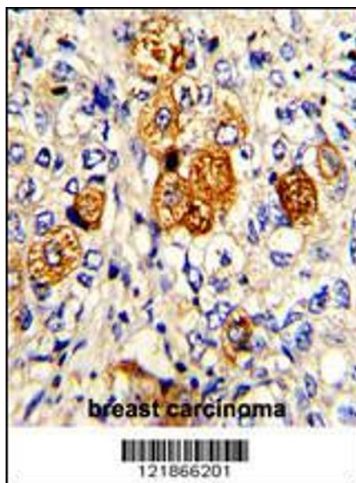
Storage: 4 °C, -20 °C

Storage Comment: Store at 4°C for three months and -20°C, stable for up to one year. As with all antibodies care should be taken to avoid repeated freeze thaw cycles. Antibodies should not be exposed to prolonged high temperatures.



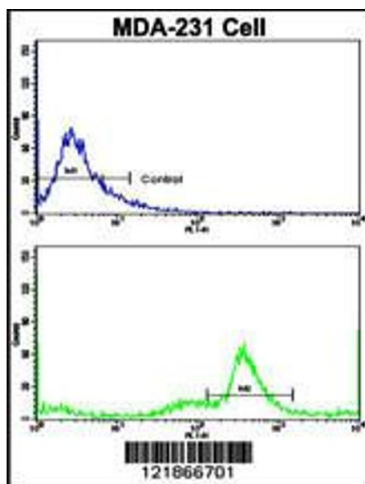
Western Blotting

Image 1. Western blot analysis of C5 Antibody in HL-60 cell line lysates (35ug/lane)(2ug/ml)



Immunohistochemistry

Image 2. Formalin-fixed and paraffin-embedded human breast carcinoma with C5 Antibody (N-term), which was peroxidase-conjugated to the secondary antibody, followed by DAB staining.



Flow Cytometry

Image 3. Flow cytometric analysis of MDA-231 cells using C5 Antibody (N-term)(bottom histogram) compared to a negative control cell (top histogram). FITC-conjugated goat-anti-rabbit secondary antibodies were used for the analysis.