



[Go to Product page](#)

Datasheet for ABIN5537752
anti-PHKG1 antibody (C-Term)

3 Images

Overview

Quantity:	400 µL
Target:	PHKG1
Binding Specificity:	AA 302-331, C-Term
Reactivity:	Human, Mouse
Host:	Rabbit
Clonality:	Polyclonal
Conjugate:	This PHKG1 antibody is un-conjugated
Application:	Western Blotting (WB), Flow Cytometry (FACS)

Product Details

Immunogen:	This Mouse Phkg1 antibody is generated from rabbits immunized with a KLH conjugated synthetic peptide between 302-331 amino acids from the C-terminal region of mouse Phkg1.
Isotype:	Ig Fraction
Purification:	This antibody is purified through a protein A column, followed by peptide affinity purification.

Target Details

Target:	PHKG1
Alternative Name:	Phkg1 (PHKG1 Products)
Background:	Phosphorylase b kinase catalyzes the phosphorylation of serine in certain substrates, including troponin I.

Target Details

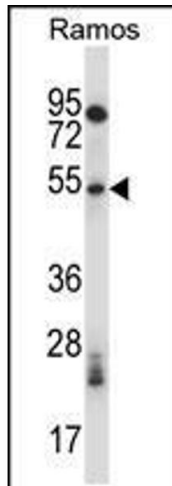
Molecular Weight:	45 kDa
Gene ID:	18682
UniProt:	P07934
Pathways:	Cellular Glucan Metabolic Process

Application Details

Application Notes:	For WB starting dilution is: 1:1000 For FACS starting dilution is: 1:10~50
Restrictions:	For Research Use only

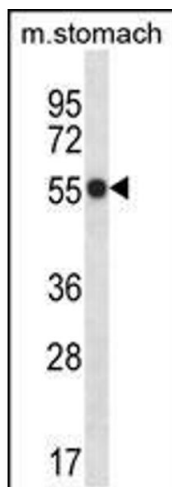
Handling

Format:	Liquid
Concentration:	0.5 mg/mL
Buffer:	Supplied in PBS with 0.09 % (W/V) sodium azide.
Preservative:	Sodium azide
Precaution of Use:	This product contains Sodium azide: a POISONOUS AND HAZARDOUS SUBSTANCE which should be handled by trained staff only.
Storage:	4 °C, -20 °C
Storage Comment:	Store at 4°C for three months and -20°C, stable for up to one year. As with all antibodies care should be taken to avoid repeated freeze thaw cycles. Antibodies should not be exposed to prolonged high temperatures.



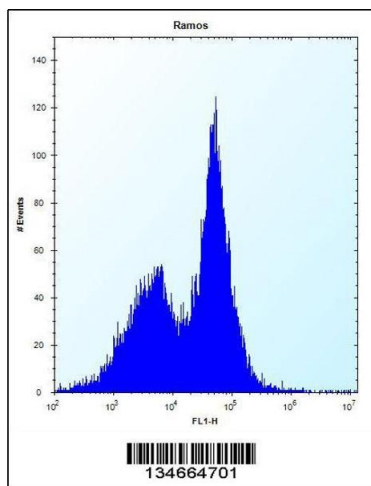
Western Blotting

Image 1. Western blot analysis in Ramos cell line lysates (35ug/lane).



Western Blotting

Image 2. Western blot analysis in mouse stomach tissue lysates (35ug/lane).



Flow Cytometry

Image 3. Flow cytometric analysis of Ramos cells (right histogram) compared to a negative control cell (left histogram). FITC-conjugated donkey-anti-rabbit secondary antibodies were used for the analysis.