

Datasheet for ABIN5537870  
**anti-SLC24A3 antibody (N-Term)**[Go to Product page](#)

## 1 Image

## Overview

Quantity:	400 µL
Target:	SLC24A3
Binding Specificity:	AA 79-108, N-Term
Reactivity:	Human
Host:	Rabbit
Clonality:	Polyclonal
Conjugate:	This SLC24A3 antibody is un-conjugated
Application:	Western Blotting (WB)

## Product Details

Immunogen:	This SLC24A3 antibody is generated from rabbits immunized with a KLH conjugated synthetic peptide between 79-108 amino acids from the N-terminal region of human SLC24A3.
Isotype:	Ig Fraction
Purification:	This antibody is purified through a protein A column, followed by peptide affinity purification.

## Target Details

Target:	SLC24A3
Alternative Name:	SLC24A3 ( <a href="#">SLC24A3 Products</a> )
Background:	Plasma membrane sodium/calcium exchangers are an important component of intracellular calcium homeostasis and electrical conduction. Potassium-dependent sodium/calcium exchangers such as SLC24A3 are believed to transport 1 intracellular calcium and 1 potassium

## Target Details

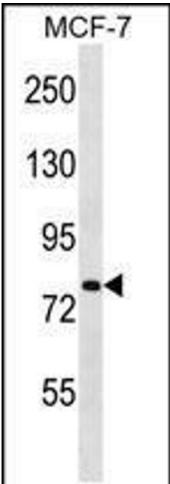
	ion in exchange for 4 extracellular sodium ions (Kraev et al., 2001 [PubMed 11294880]).
Molecular Weight:	72 kDa
Gene ID:	57419
UniProt:	<a href="#">Q9HC58</a>

## Application Details

Application Notes:	For WB starting dilution is: 1:1000
Restrictions:	For Research Use only

## Handling

Format:	Liquid
Concentration:	0.5 mg/mL
Buffer:	Supplied in PBS with 0.09 % (W/V) sodium azide.
Preservative:	Sodium azide
Precaution of Use:	This product contains Sodium azide: a POISONOUS AND HAZARDOUS SUBSTANCE which should be handled by trained staff only.
Storage:	4 °C,-20 °C
Storage Comment:	Store at 4°C for three months and -20°C, stable for up to one year. As with all antibodies care should be taken to avoid repeated freeze thaw cycles. Antibodies should not be exposed to prolonged high temperatures.



Western Blotting

**Image 1.** Western blot analysis in MCF-7 cell line lysates (35ug/lane).