



[Go to Product page](#)

Datasheet for ABIN5537871

## anti-SLC15A3 antibody (AA 168-197)

### 3 Images

#### Overview

Quantity:	400 µL
Target:	SLC15A3
Binding Specificity:	AA 168-197
Reactivity:	Human, Mouse
Host:	Rabbit
Clonality:	Polyclonal
Conjugate:	This SLC15A3 antibody is un-conjugated
Application:	Western Blotting (WB), Immunohistochemistry (Paraffin-embedded Sections) (IHC (p))

#### Product Details

Immunogen:	This SLC15A3 antibody is generated from rabbits immunized with a KLH conjugated synthetic peptide between 168-197 amino acids from the Central region of human SLC15A3.
Isotype:	Ig Fraction
Purification:	This antibody is purified through a protein A column, followed by peptide affinity purification.

#### Target Details

Target:	SLC15A3
Alternative Name:	SLC15A3 ( <a href="#">SLC15A3 Products</a> )
Background:	SLC15A3 is proton oligopeptide cotransporter. Transports free histidine and certain di-and tripeptides (By similarity).

## Target Details

---

Molecular Weight: 64 kDa

Gene ID: 51296

UniProt: [Q8IY34](#)

## Application Details

---

Application Notes: For WB starting dilution is: 1:1000

For IHC-P starting dilution is: 1:10~50

Restrictions: For Research Use only

## Handling

---

Format: Liquid

Concentration: 0.44 mg/mL

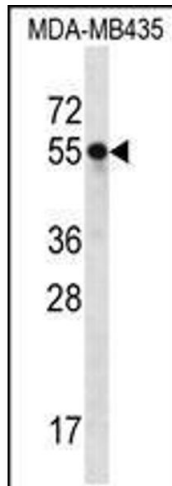
Buffer: Supplied in PBS with 0.09 % (W/V) sodium azide.

Preservative: Sodium azide

Precaution of Use: This product contains Sodium azide: a POISONOUS AND HAZARDOUS SUBSTANCE which should be handled by trained staff only.

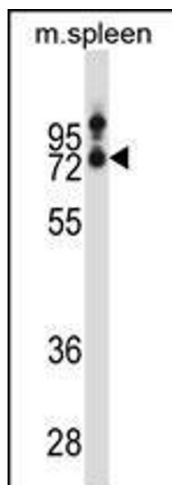
Storage: 4 °C,-20 °C

Storage Comment: Store at 4°C for three months and -20°C, stable for up to one year. As with all antibodies care should be taken to avoid repeated freeze thaw cycles. Antibodies should not be exposed to prolonged high temperatures.



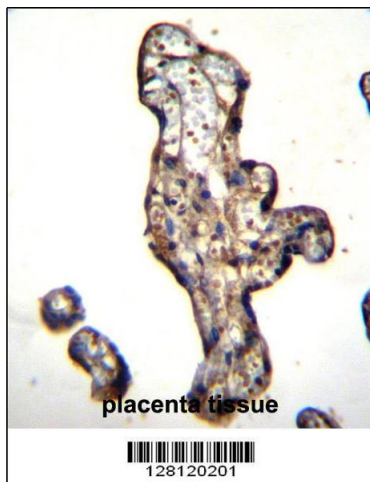
#### Western Blotting

**Image 1.** Western blot analysis in MDA-MB435 cell line lysates (35ug/lane).



#### Western Blotting

**Image 2.** Western blot analysis in mouse spleen tissue lysates (35ug/lane).



#### Immunohistochemistry

**Image 3.** SLC15A3 Antibody immunohistochemistry analysis in formalin fixed and paraffin embedded human placenta tissue followed by peroxidase conjugation of the secondary antibody and DAB staining.