



[Go to Product page](#)

Datasheet for ABIN5537872

anti-SLC04C1 antibody (C-Term)

3 Images

Overview

Quantity:	400 µL
Target:	SLC04C1 (OATP-H)
Binding Specificity:	AA 516-544, C-Term
Reactivity:	Human
Host:	Rabbit
Clonality:	Polyclonal
Conjugate:	This SLC04C1 antibody is un-conjugated
Application:	Western Blotting (WB), Flow Cytometry (FACS), Immunohistochemistry (Paraffin-embedded Sections) (IHC (p))

Product Details

Immunogen:	This SLC04C1 antibody is generated from rabbits immunized with a KLH conjugated synthetic peptide between 516-544 amino acids from the C-terminal region of human SLC04C1.
Isotype:	Ig Fraction
Purification:	This antibody is purified through a protein A column, followed by peptide affinity purification.

Target Details

Target:	SLC04C1 (OATP-H)
Alternative Name:	SLC04C1 (OATP-H Products)
Background:	SLC04C1 belongs to the organic anion transporter (OATP) family. OATPs are involved in the membrane transport of bile acids, conjugated steroids, thyroid hormone, eicosanoids, peptides,

Target Details

and numerous drugs in many tissues (Mikkaichi et al., 2004 [PubMed 14993604]).

Molecular Weight: 79 kDa

Gene ID: 353189

UniProt: [Q6ZQN7](#)

Application Details

Application Notes: For WB starting dilution is: 1:1000

For IHC-P starting dilution is: 1:10~50

For FACS starting dilution is: 1:10~50

Restrictions: For Research Use only

Handling

Format: Liquid

Concentration: 0.49 mg/mL

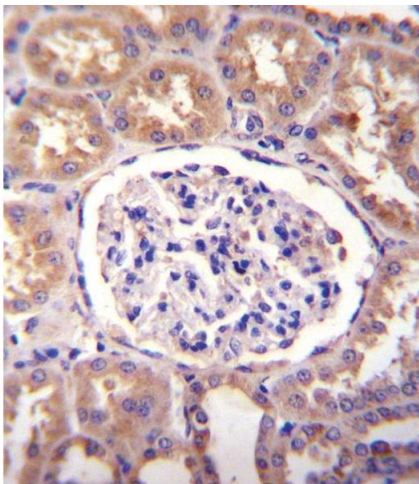
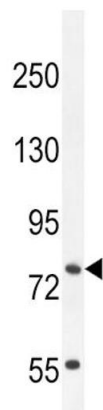
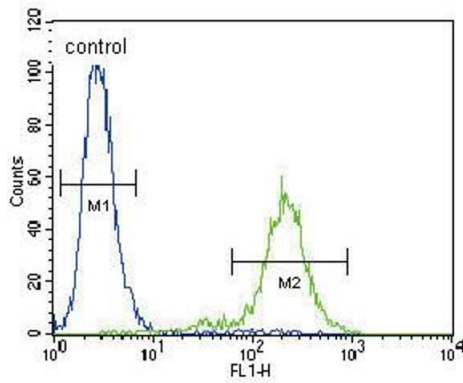
Buffer: Supplied in PBS with 0.09 % (W/V) sodium azide.

Preservative: Sodium azide

Precaution of Use: This product contains Sodium azide: a POISONOUS AND HAZARDOUS SUBSTANCE which should be handled by trained staff only.

Storage: 4 °C, -20 °C

Storage Comment: Store at 4°C for three months and -20°C, stable for up to one year. As with all antibodies care should be taken to avoid repeated freeze thaw cycles. Antibodies should not be exposed to prolonged high temperatures.



Flow Cytometry

Image 1. Flow cytometric analysis of NCI-H460 cells (right histogram) compared to a negative control cell (left histogram). FITC-conjugated goat-anti-rabbit secondary antibodies were used for the analysis.

Western Blotting

Image 2. Western blot analysis in NCI-H460 cell line lysates (35ug/lane).

Immunohistochemistry

Image 3. SLCO4C1 Antibody immunohistochemistry analysis in formalin fixed and paraffin embedded human kidney tissue followed by peroxidase conjugation of the secondary antibody and DAB staining.