

Datasheet for ABIN5538053
anti-OR5D13 antibody (AA 172-199)[Go to Product page](#)

1 Image

Overview

Quantity:	400 µL
Target:	OR5D13
Binding Specificity:	AA 172-199
Reactivity:	Human
Host:	Rabbit
Clonality:	Polyclonal
Conjugate:	This OR5D13 antibody is un-conjugated
Application:	Western Blotting (WB)

Product Details

Immunogen:	This OR5D13 antibody is generated from rabbits immunized with a KLH conjugated synthetic peptide between 172-199 amino acids from the Central region of human OR5D13.
Isotype:	Ig Fraction
Purification:	This antibody is purified through a protein A column, followed by peptide affinity purification.

Target Details

Target:	OR5D13
Alternative Name:	OR5D13 (OR5D13 Products)
Background:	Olfactory receptors interact with odorant molecules in the nose, to initiate a neuronal response that triggers the perception of a smell. The olfactory receptor proteins are members of a large family of G-protein-coupled receptors (GPCR) arising from single coding-exon genes. Olfactory

Target Details

receptors share a 7-transmembrane domain structure with many neurotransmitter and hormone receptors and are responsible for the recognition and G protein-mediated transduction of odorant signals. The olfactory receptor gene family is the largest in the genome. The nomenclature assigned to the olfactory receptor genes and proteins for this organism is independent of other organisms.

Molecular Weight: 35 kDa

Gene ID: 390142

UniProt: [Q8NGL4](#)

Application Details

Application Notes: For WB starting dilution is: 1:1000

Restrictions: For Research Use only

Handling

Format: Liquid

Concentration: 0.5 mg/mL

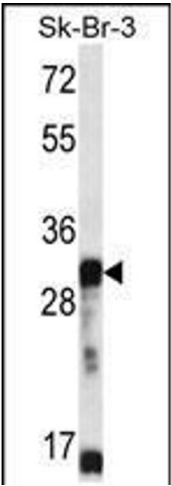
Buffer: Supplied in PBS with 0.09 % (W/V) sodium azide.

Preservative: Sodium azide

Precaution of Use: This product contains Sodium azide: a POISONOUS AND HAZARDOUS SUBSTANCE which should be handled by trained staff only.

Storage: 4 °C, -20 °C

Storage Comment: Store at 4°C for three months and -20°C, stable for up to one year. As with all antibodies care should be taken to avoid repeated freeze thaw cycles. Antibodies should not be exposed to prolonged high temperatures.



Western Blotting

Image 1. Western blot analysis in SK-BR-3 cell line lysates (35ug/lane).