

Datasheet for ABIN5538079
anti-Neuroigin Y antibody (N-Term)



[Go to Product page](#)

2 Images

Overview

| | |
|----------------------|--|
| Quantity: | 400 µL |
| Target: | Neuroigin Y (NLGN4Y) |
| Binding Specificity: | AA 139-167, N-Term |
| Reactivity: | Human |
| Host: | Rabbit |
| Clonality: | Polyclonal |
| Conjugate: | This Neuroigin Y antibody is un-conjugated |
| Application: | Western Blotting (WB) |

Product Details

| | |
|---------------|--|
| Immunogen: | This NLGN4Y antibody is generated from rabbits immunized with a KLH conjugated synthetic peptide between 139-167 amino acids from the N-terminal region of human NLGN4Y. |
| Isotype: | Ig Fraction |
| Purification: | This antibody is purified through a protein A column, followed by peptide affinity purification. |

Target Details

| | |
|-------------------|--|
| Target: | Neuroigin Y (NLGN4Y) |
| Alternative Name: | NLGN4Y (NLGN4Y Products) |
| Background: | Neuroigins, such as NLGN4Y, are cell adhesion molecules present at the postsynaptic side of the synapse and may be essential for the formation of functional synapses (Jamain et al., 2003 [PubMed 12669065]). |

Target Details

Molecular Weight: 92 kDa

Gene ID: 22829

UniProt: [Q8NFZ3](#)

Application Details

Application Notes: For WB starting dilution is: 1:1000

Restrictions: For Research Use only

Handling

Format: Liquid

Concentration: 0.5 mg/mL

Buffer: Supplied in PBS with 0.09 % (W/V) sodium azide.

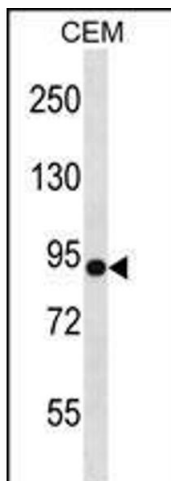
Preservative: Sodium azide

Precaution of Use: This product contains Sodium azide: a POISONOUS AND HAZARDOUS SUBSTANCE which should be handled by trained staff only.

Storage: 4 °C, -20 °C

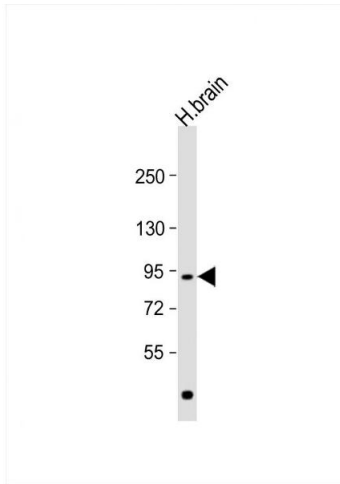
Storage Comment: Store at 4°C for three months and -20°C, stable for up to one year. As with all antibodies care should be taken to avoid repeated freeze thaw cycles. Antibodies should not be exposed to prolonged high temperatures.

Images



Western Blotting

Image 1. Western blot analysis in CEM cell line lysates (35ug/lane).



Western Blotting

Image 2. Western Blot at 1:1000 dilution + human brain lysate Lysates/proteins at 20 ug per lane.