



[Go to Product page](#)

Datasheet for ABIN5538187  
**anti-METTL4 antibody (C-Term)**

3 Images

Overview

Quantity:	200 µL
Target:	METTL4
Binding Specificity:	AA 315-344, C-Term
Reactivity:	Human, Mouse
Host:	Rabbit
Clonality:	Polyclonal
Conjugate:	This METTL4 antibody is un-conjugated
Application:	Western Blotting (WB), Immunohistochemistry (Paraffin-embedded Sections) (IHC (p))

Product Details

Immunogen:	This METTL4 antibody is generated from rabbits immunized with a KLH conjugated synthetic peptide between 315-344 amino acids from the C-terminal region of human METTL4.
Isotype:	Ig Fraction
Purification:	This antibody is purified through a protein A column, followed by peptide affinity purification.

Target Details

Target:	METTL4
Alternative Name:	METTL4 ( <a href="#">METTL4 Products</a> )
Molecular Weight:	54 kDa
Gene ID:	64863

## Target Details

UniProt: [Q8N3J2](#)

## Application Details

Application Notes: For WB starting dilution is: 1:1000

For IHC-P starting dilution is: 1:50~100

Restrictions: For Research Use only

## Handling

Format: Liquid

Concentration: 0.5 mg/mL

Buffer: Supplied in PBS with 0.09 % (W/V) sodium azide.

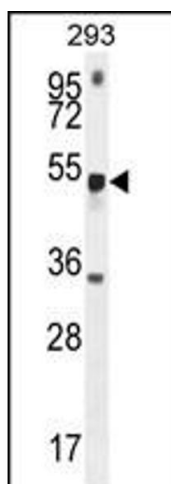
Preservative: Sodium azide

Precaution of Use: This product contains Sodium azide: a POISONOUS AND HAZARDOUS SUBSTANCE which should be handled by trained staff only.

Storage: 4 °C,-20 °C

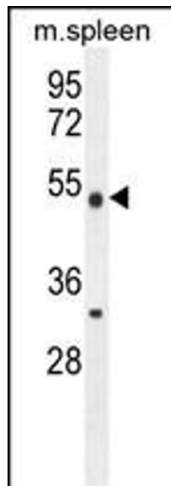
Storage Comment: Store at 4°C for three months and -20°C, stable for up to one year. As with all antibodies care should be taken to avoid repeated freeze thaw cycles. Antibodies should not be exposed to prolonged high temperatures.

## Images



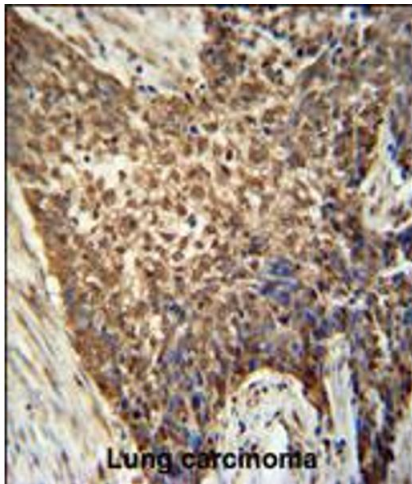
### Western Blotting

**Image 1.** Western blot analysis in 293 cell line lysates (35ug/lane).



### Western Blotting

**Image 2.** Western blot analysis in mouse spleen tissue lysates (35ug/lane).



### Immunohistochemistry

**Image 3.** METTL4 antibody immunohistochemistry analysis in formalin fixed and paraffin embedded human Lung carcinoma followed by peroxidase conjugation of the secondary antibody and DAB staining.