



[Go to Product page](#)

Datasheet for ABIN5538213  
**anti-TMED6 antibody (AA 125-153)**

1 Image

Overview

Quantity:	400 µL
Target:	TMED6
Binding Specificity:	AA 125-153
Reactivity:	Human
Host:	Rabbit
Clonality:	Polyclonal
Conjugate:	This TMED6 antibody is un-conjugated
Application:	Western Blotting (WB)

Product Details

Immunogen:	This TMED6 antibody is generated from rabbits immunized with a KLH conjugated synthetic peptide between 125-153 amino acids from the Central region of human TMED6.
Isotype:	Ig Fraction
Purification:	This antibody is purified through a protein A column, followed by peptide affinity purification.

Target Details

Target:	TMED6
Alternative Name:	TMED6 ( <a href="#">TMED6 Products</a> )
Background:	TMED6 (transmembrane emp24 domain-containing protein 6) is a 240 amino acid single-pass type I membrane protein that belongs to the EMP24/GP25L family and contains one GOLD domain. The gene that encodes TMED6 contains around 8,564 bases and maps to human

## Target Details

---

chromosome 16q22.1. Encoding over 900 genes and consisting of approximately 90 million base pairs, chromosome 16 makes up nearly 3 % of the human genome and is associated with a variety of genetic disorders. The GAN gene is located on chromosome 16 and, when mutated, may lead to giant axonal neuropathy, a nervous system disorder characterized by increasing malfunction with growth. Alterations in the CREB gene and NOD2 gene, both of which are located on chromosome 16, result in Rubinstein-Taybi syndrome and Crohn's disease, respectively. An association with systemic lupus erythematosus and a number of other autoimmune disorders with the pericentromeric region of chromosome 16 has led to the identification of SLC5A11 as a potential autoimmune modifier.

---

Molecular Weight: 28 kDa

---

Gene ID: 146456

---

UniProt: [Q8WW62](#)

## Application Details

---

Application Notes: For WB starting dilution is: 1:1000

---

Restrictions: For Research Use only

## Handling

---

Format: Liquid

---

Concentration: 0.5 mg/mL

---

Buffer: Supplied in PBS with 0.09 % (W/V) sodium azide.

---

Preservative: Sodium azide

---

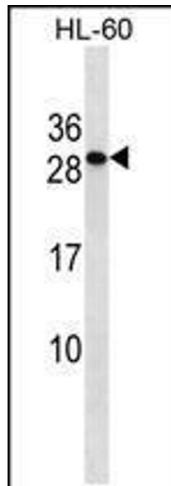
Precaution of Use: This product contains Sodium azide: a POISONOUS AND HAZARDOUS SUBSTANCE which should be handled by trained staff only.

---

Storage: 4 °C, -20 °C

---

Storage Comment: Store at 4°C for three months and -20°C, stable for up to one year. As with all antibodies care should be taken to avoid repeated freeze thaw cycles. Antibodies should not be exposed to prolonged high temperatures.



### Western Blotting

**Image 1.** Western blot analysis in HL-60 cell line lysates (35ug/lane).