

Datasheet for ABIN5538275  
**anti-VSX1 antibody (AA 125-154)**



[Go to Product page](#)

1 Image

## Overview

Quantity:	400 µL
Target:	VSX1
Binding Specificity:	AA 125-154
Reactivity:	Human
Host:	Rabbit
Clonality:	Polyclonal
Conjugate:	This VSX1 antibody is un-conjugated
Application:	Western Blotting (WB)

## Product Details

Immunogen:	This VSX1 antibody is generated from rabbits immunized with a KLH conjugated synthetic peptide between 125-154 amino acids from the Central region of human VSX1.
Isotype:	Ig Fraction
Purification:	This antibody is purified through a protein A column, followed by peptide affinity purification.

## Target Details

Target:	VSX1
Alternative Name:	VSX1 ( <a href="#">VSX1 Products</a> )
Background:	VSX1 contains a paired-like homeodomain and binds to the core of the locus control region of the red/green visual pigment gene cluster. The encoded protein may regulate expression of the cone opsin genes early in development. Mutations in this gene can cause posterior

## Target Details

---

polymorphous corneal dystrophy and keratoconus.

Molecular Weight: 38 kDa

Gene ID: 30813

UniProt: [Q9NZR4](#)

## Application Details

---

Application Notes: For WB starting dilution is: 1:1000

Restrictions: For Research Use only

## Handling

---

Format: Liquid

Concentration: 0.3 mg/mL

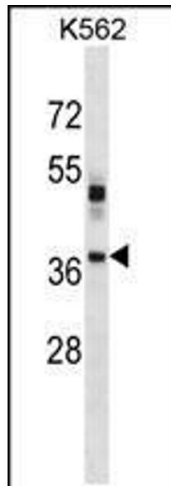
Buffer: Supplied in PBS with 0.09 % (W/V) sodium azide.

Preservative: Sodium azide

Precaution of Use: This product contains Sodium azide: a POISONOUS AND HAZARDOUS SUBSTANCE which should be handled by trained staff only.

Storage: 4 °C, -20 °C

Storage Comment: Store at 4°C for three months and -20°C, stable for up to one year. As with all antibodies care should be taken to avoid repeated freeze thaw cycles. Antibodies should not be exposed to prolonged high temperatures.



### Western Blotting

**Image 1.** Western blot analysis in K562 cell line lysates (35ug/lane).