

Datasheet for ABIN5538279

anti-Proline Rich 15 antibody (C-Term)[Go to Product page](#)**1** Image

Overview

Quantity:	400 µL
Target:	Proline Rich 15 (PRR15)
Binding Specificity:	AA 71-100, C-Term
Reactivity:	Human
Host:	Rabbit
Clonality:	Polyclonal
Conjugate:	This Proline Rich 15 antibody is un-conjugated
Application:	Western Blotting (WB)

Product Details

Immunogen:	This PRR15 antibody is generated from rabbits immunized with a KLH conjugated synthetic peptide between 71-100 amino acids from the C-terminal region of human PRR15.
Isotype:	Ig Fraction
Purification:	This antibody is purified through a protein A column, followed by peptide affinity purification.

Target Details

Target:	Proline Rich 15 (PRR15)
Alternative Name:	PRR15 (PRR15 Products)
Background:	PRR15 may have a role in proliferation and/or differentiation (By similarity).
Molecular Weight:	14 kDa

Target Details

Gene ID:	222171
UniProt:	Q8IV56

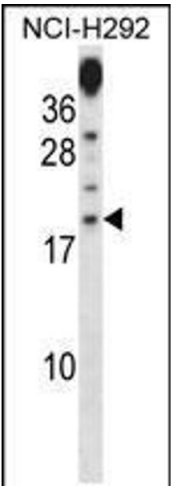
Application Details

Application Notes:	For WB starting dilution is: 1:1000
Restrictions:	For Research Use only

Handling

Format:	Liquid
Concentration:	0.5 mg/mL
Buffer:	Supplied in PBS with 0.09 % (W/V) sodium azide.
Preservative:	Sodium azide
Precaution of Use:	This product contains Sodium azide: a POISONOUS AND HAZARDOUS SUBSTANCE which should be handled by trained staff only.
Storage:	4 °C,-20 °C
Storage Comment:	Store at 4°C for three months and -20°C, stable for up to one year. As with all antibodies care should be taken to avoid repeated freeze thaw cycles. Antibodies should not be exposed to prolonged high temperatures.

Images



Western Blotting

Image 1. Western blot analysis in NCI-H292 cell line lysates (35ug/lane).