

Datasheet for ABIN5538350
anti-MSL1 antibody (AA 339-367)[Go to Product page](#)

1 Image

Overview

Quantity:	400 µL
Target:	MSL1
Binding Specificity:	AA 339-367
Reactivity:	Human
Host:	Rabbit
Clonality:	Polyclonal
Conjugate:	This MSL1 antibody is un-conjugated
Application:	Western Blotting (WB)

Product Details

Immunogen:	This MSL1 antibody is generated from rabbits immunized with a KLH conjugated synthetic peptide between 339-367 amino acids from the Central region of human MSL1.
Isotype:	Ig Fraction
Purification:	This antibody is purified through a protein A column, followed by peptide affinity purification.

Target Details

Target:	MSL1
Alternative Name:	MSL1 (MSL1 Products)
Background:	Component of histone acetyltransferase complex responsible for the majority of histone H4 acetylation at 'Lys-16' which is implicated in the formation of higher-order chromatin structure.

Target Details

Molecular Weight:	67 kDa
Gene ID:	339287
UniProt:	Q68DK7

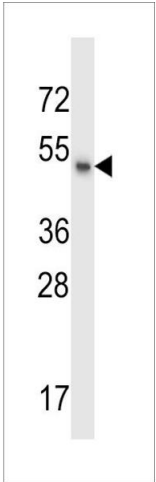
Application Details

Application Notes:	For WB starting dilution is: 1:1000
Restrictions:	For Research Use only

Handling

Format:	Liquid
Concentration:	0.45 mg/mL
Buffer:	Supplied in PBS with 0.09 % (W/V) sodium azide.
Preservative:	Sodium azide
Precaution of Use:	This product contains Sodium azide: a POISONOUS AND HAZARDOUS SUBSTANCE which should be handled by trained staff only.
Storage:	4 °C, -20 °C
Storage Comment:	Store at 4°C for three months and -20°C, stable for up to one year. As with all antibodies care should be taken to avoid repeated freeze thaw cycles. Antibodies should not be exposed to prolonged high temperatures.

Images



Western Blotting

Image 1. Western blot analysis in Hela cell line lysates (35ug/lane).