

Datasheet for ABIN5538359
anti-ZDHHC2 antibody (N-Term)



[Go to Product page](#)

3 Images

Overview

Quantity:	400 µL
Target:	ZDHHC2
Binding Specificity:	AA 77-106, N-Term
Reactivity:	Human, Mouse
Host:	Rabbit
Clonality:	Polyclonal
Conjugate:	This ZDHHC2 antibody is un-conjugated
Application:	Western Blotting (WB), Flow Cytometry (FACS), Immunohistochemistry (Paraffin-embedded Sections) (IHC (p))

Product Details

Immunogen:	This ZDHC2 antibody is generated from rabbits immunized with a KLH conjugated synthetic peptide between 77-106 amino acids from the N-terminal region of human ZDHC2.
Isotype:	Ig Fraction
Purification:	This antibody is purified through a protein A column, followed by peptide affinity purification.

Target Details

Target:	ZDHHC2
Alternative Name:	ZDHC2 (ZDHHC2 Products)
Background:	Palmitoyltransferase specific for GAP43 and DLG4/PSD95 (By similarity).

Target Details

Molecular Weight: 42 kDa

Gene ID: 51201

UniProt: [Q9UIJ5](#)

Application Details

Application Notes: For WB starting dilution is: 1:1000

For IHC-P starting dilution is: 1:50~100

For FACS starting dilution is: 1:10~50

Restrictions: For Research Use only

Handling

Format: Liquid

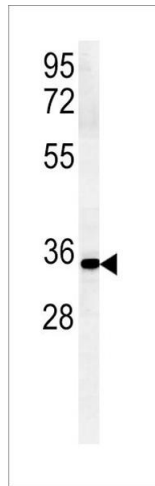
Buffer: Supplied in PBS with 0.09 % (W/V) sodium azide.

Preservative: Sodium azide

Precaution of Use: This product contains Sodium azide: a POISONOUS AND HAZARDOUS SUBSTANCE which should be handled by trained staff only.

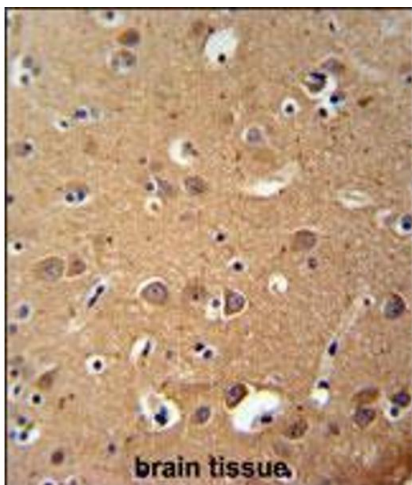
Storage: 4 °C,-20 °C

Storage Comment: Store at 4°C for three months and -20°C, stable for up to one year. As with all antibodies care should be taken to avoid repeated freeze thaw cycles. Antibodies should not be exposed to prolonged high temperatures.



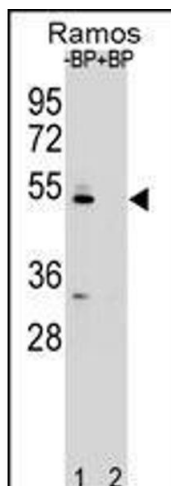
Western Blotting

Image 1. Western blot analysis in mouse Neuro-2a cell line lysates (15ug/lane).



Immunohistochemistry

Image 2. ZDHC2 Antibody immunohistochemistry analysis in formalin fixed and paraffin embedded human brain tissue followed by peroxidase conjugation of the secondary antibody and DAB staining.



Western Blotting

Image 3. Western blot analysis of ZDHC2 Antibody Pab pre-incubated without (lane 1) and with (lane 2) blocking peptide in Ramos cell line lysate.