

Datasheet for ABIN5538360
anti-ZDHHC6 antibody (C-Term)[Go to Product page](#)

2 Images

Overview

Quantity:	400 µL
Target:	ZDHHC6
Binding Specificity:	AA 288-317, C-Term
Reactivity:	Human, Mouse
Host:	Rabbit
Clonality:	Polyclonal
Conjugate:	This ZDHHC6 antibody is un-conjugated
Application:	Western Blotting (WB)

Product Details

Immunogen:	This ZDHHC6 antibody is generated from rabbits immunized with a KLH conjugated synthetic peptide between 288-317 amino acids from the C-terminal region of human ZDHHC6.
Isotype:	Ig Fraction
Purification:	This antibody is purified through a protein A column, followed by peptide affinity purification.

Target Details

Target:	ZDHHC6
Alternative Name:	ZDHHC6 (ZDHHC6 Products)
Molecular Weight:	48 kDa
Gene ID:	64429

Target Details

UniProt: [Q9H6R6](#)

Application Details

Application Notes: For WB starting dilution is: 1:1000

Restrictions: For Research Use only

Handling

Format: Liquid

Concentration: 0.41 mg/mL

Buffer: Supplied in PBS with 0.09 % (W/V) sodium azide.

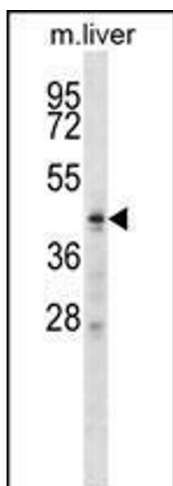
Preservative: Sodium azide

Precaution of Use: This product contains Sodium azide: a POISONOUS AND HAZARDOUS SUBSTANCE which should be handled by trained staff only.

Storage: 4 °C, -20 °C

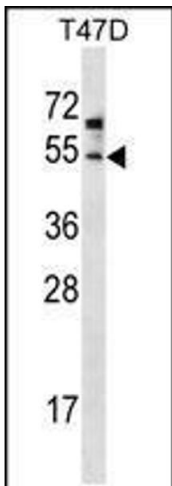
Storage Comment: Store at 4°C for three months and -20°C, stable for up to one year. As with all antibodies care should be taken to avoid repeated freeze thaw cycles. Antibodies should not be exposed to prolonged high temperatures.

Images



Western Blotting

Image 1. Western blot analysis in mouse liver tissue lysates (35ug/lane).



Western Blotting

Image 2. Western blot analysis in T47D cell line lysates (35ug/lane).