

Datasheet for ABIN5538378
anti-STRA6 antibody (C-Term)



[Go to Product page](#)

2 Images

Overview

Quantity:	400 µL
Target:	STRA6
Binding Specificity:	AA 483-509, C-Term
Reactivity:	Mouse, Rat
Host:	Rabbit
Clonality:	Polyclonal
Conjugate:	This STRA6 antibody is un-conjugated
Application:	Western Blotting (WB)

Product Details

Immunogen:	This Rat Stra6 antibody is generated from rabbits immunized with a KLH conjugated synthetic peptide between 483-509 amino acids from the C-terminal region of rat Stra6.
Isotype:	Ig Fraction
Purification:	This antibody is purified through a protein A column, followed by peptide affinity purification.

Target Details

Target:	STRA6
Alternative Name:	Stra6 (STRA6 Products)
Background:	Stra6 may act as a high-affinity cell-surface receptor for the complex retinol-retinol binding protein (RBP/RBP4). Acts by removing retinol from RBP/RBP4 and transports it across the plasma membrane, where it can be metabolized. This mechanism does not depend on

Target Details

endocytosis. Binds to RBP/RBP4 with high affinity. Increases cellular retinol uptake from the retinol-RBP complex (By similarity).

Molecular Weight: 74 kDa

Gene ID: 363071

UniProt: [Q4QR83](#)

Pathways: [Feeding Behaviour](#)

Application Details

Application Notes: For WB starting dilution is: 1:1000

Restrictions: For Research Use only

Handling

Format: Liquid

Concentration: 0.5 mg/mL

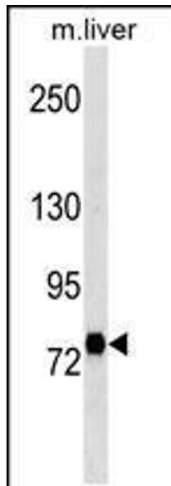
Buffer: Supplied in PBS with 0.09 % (W/V) sodium azide.

Preservative: Sodium azide

Precaution of Use: This product contains Sodium azide: a POISONOUS AND HAZARDOUS SUBSTANCE which should be handled by trained staff only.

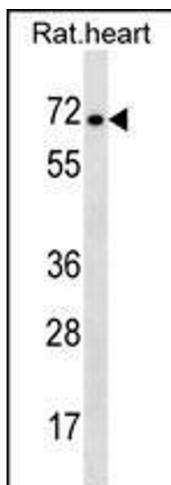
Storage: 4 °C, -20 °C

Storage Comment: Store at 4°C for three months and -20°C, stable for up to one year. As with all antibodies care should be taken to avoid repeated freeze thaw cycles. Antibodies should not be exposed to prolonged high temperatures.



Western Blotting

Image 1. Western blot analysis in mouse liver tissue lysates (35ug/lane). This demonstrates detected the Stra6 protein (arrow).



Western Blotting

Image 2. Western blot analysis in rat heart tissue lysates (35ug/lane). This demonstrates detected the Stra6 protein (arrow).