

Datasheet for ABIN5538424
anti-PHYHD1 antibody (C-Term)



[Go to Product page](#)

1 Image

Overview

Quantity:	400 µL
Target:	PHYHD1
Binding Specificity:	AA 232-260, C-Term
Reactivity:	Human
Host:	Rabbit
Clonality:	Polyclonal
Application:	Western Blotting (WB)

Product Details

Immunogen:	This PHYHD1 antibody is generated from rabbits immunized with a KLH conjugated synthetic peptide between 232-260 amino acids from the C-terminal region of human PHYHD1.
Isotype:	Ig Fraction
Purification:	This antibody is purified through a protein A column, followed by peptide affinity purification.

Target Details

Target:	PHYHD1
Alternative Name:	PHYHD1 (PHYHD1 Products)
Background:	PHYHD1 probably acts as alpha-ketoglutarate-dependent dioxygenase (By similarity).
Molecular Weight:	32 kDa
Gene ID:	254295

Target Details

UniProt: [Q5SRE7](#)

Application Details

Application Notes: For WB starting dilution is: 1:1000

Restrictions: For Research Use only

Handling

Format: Liquid

Concentration: 0.5 mg/mL

Buffer: Supplied in PBS with 0.09 % (W/V) sodium azide.

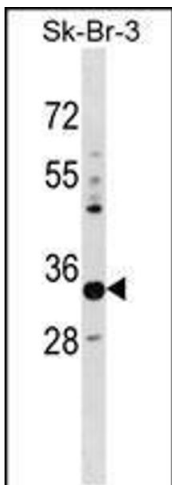
Preservative: Sodium azide

Precaution of Use: This product contains Sodium azide: a POISONOUS AND HAZARDOUS SUBSTANCE which should be handled by trained staff only.

Storage: 4 °C, -20 °C

Storage Comment: Store at 4°C for three months and -20°C, stable for up to one year. As with all antibodies care should be taken to avoid repeated freeze thaw cycles. Antibodies should not be exposed to prolonged high temperatures.

Images



Western Blotting

Image 1. Western blot analysis in SK-BR-3 cell line lysates (35ug/lane).