

Datasheet for ABIN5538563
anti-RQCD1 antibody (AA 106-134)[Go to Product page](#)

2 Images

Overview

Quantity:	400 µL
Target:	RQCD1
Binding Specificity:	AA 106-134
Reactivity:	Human, Mouse
Host:	Rabbit
Clonality:	Polyclonal
Conjugate:	This RQCD1 antibody is un-conjugated
Application:	Western Blotting (WB)

Product Details

Immunogen:	This RQCD1 antibody is generated from rabbits immunized with a KLH conjugated synthetic peptide between 106-134 amino acids from the Central region of human RQCD1.
Isotype:	Ig Fraction
Purification:	This antibody is purified through a protein A column, followed by peptide affinity purification.

Target Details

Target:	RQCD1
Alternative Name:	RQCD1 (RQCD1 Products)
Background:	Transcription factor that down-regulates MYB-and JUN-dependent transcription. May play a role in cell differentiation (By similarity). Can bind oligonucleotides, such as poly-G, poly-C or poly-T (in vitro), but the physiological relevance of this is not certain. Does not bind poly-A.

Target Details

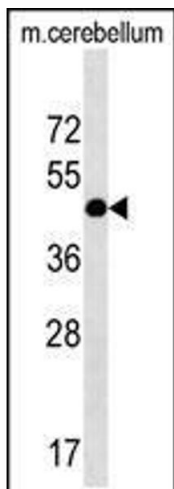
Molecular Weight:	34 kDa
Gene ID:	9125
UniProt:	Q92600
Pathways:	Intracellular Steroid Hormone Receptor Signaling Pathway , Regulation of Intracellular Steroid Hormone Receptor Signaling

Application Details

Application Notes:	For WB starting dilution is: 1:1000
Restrictions:	For Research Use only

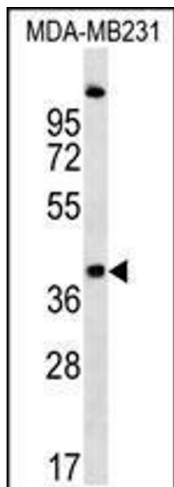
Handling

Format:	Liquid
Concentration:	0.5 mg/mL
Buffer:	Supplied in PBS with 0.09 % (W/V) sodium azide.
Preservative:	Sodium azide
Precaution of Use:	This product contains Sodium azide: a POISONOUS AND HAZARDOUS SUBSTANCE which should be handled by trained staff only.
Storage:	4 °C, -20 °C
Storage Comment:	Store at 4°C for three months and -20°C, stable for up to one year. As with all antibodies care should be taken to avoid repeated freeze thaw cycles. Antibodies should not be exposed to prolonged high temperatures.



Western Blotting

Image 1. Western blot analysis in mouse cerebellum tissue lysates (35ug/lane).



Western Blotting

Image 2. Western blot analysis in MDA-MB231 cell line lysates (35ug/lane).