



[Go to Product page](#)

Datasheet for ABIN5538608
anti-OR4F17 antibody (N-Term)

1 Image

Overview

Quantity:	400 µL
Target:	OR4F17
Binding Specificity:	AA 61-89, N-Term
Reactivity:	Human
Host:	Rabbit
Clonality:	Polyclonal
Conjugate:	This OR4F17 antibody is un-conjugated
Application:	Western Blotting (WB)

Product Details

Immunogen:	This OR4F17 antibody is generated from rabbits immunized with a KLH conjugated synthetic peptide between 61-89 amino acids from the N-terminal region of human OR4F17.
Isotype:	Ig Fraction
Purification:	This antibody is purified through a protein A column, followed by peptide affinity purification.

Target Details

Target:	OR4F17
Alternative Name:	OR4F17 (OR4F17 Products)
Background:	Olfactory receptors interact with odorant molecules in the nose, to initiate a neuronal response that triggers the perception of a smell. The olfactory receptor proteins are members of a large family of G-protein-coupled receptors (GPCR) arising from single coding-exon genes. Olfactory

Target Details

receptors share a 7-transmembrane domain structure with many neurotransmitter and hormone receptors and are responsible for the recognition and G protein-mediated transduction of odorant signals. The olfactory receptor gene family is the largest in the genome. The nomenclature assigned to the olfactory receptor genes and proteins for this organism is independent of other organisms.

Molecular Weight: 34 kDa

Gene ID: 81099

UniProt: [Q8NGA8](#)

Application Details

Application Notes: For WB starting dilution is: 1:1000

Restrictions: For Research Use only

Handling

Format: Liquid

Concentration: 0.39 mg/mL

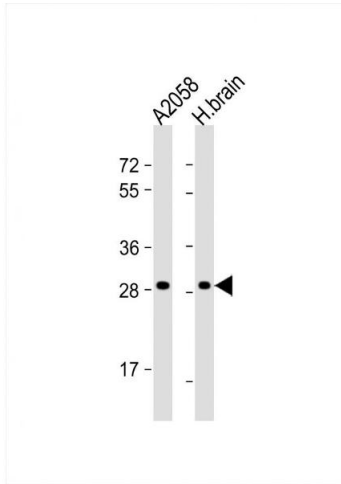
Buffer: Supplied in PBS with 0.09 % (W/V) sodium azide.

Preservative: Sodium azide

Precaution of Use: This product contains Sodium azide: a POISONOUS AND HAZARDOUS SUBSTANCE which should be handled by trained staff only.

Storage: 4 °C,-20 °C

Storage Comment: Store at 4°C for three months and -20°C, stable for up to one year. As with all antibodies care should be taken to avoid repeated freeze thaw cycles. Antibodies should not be exposed to prolonged high temperatures.



Western Blotting

Image 1. Western Blot at 1:1000 dilution Lane 1: A2058 whole cell lysate Lane 2: human brain lysate Lysates/proteins at 20 ug per lane.