

Datasheet for ABIN5538682
anti-NAPB antibody (N-Term)[Go to Product page](#)

1 Image

Overview

Quantity:	400 µL
Target:	NAPB
Binding Specificity:	AA 13-40, N-Term
Reactivity:	Human
Host:	Rabbit
Clonality:	Polyclonal
Conjugate:	This NAPB antibody is un-conjugated
Application:	Western Blotting (WB)

Product Details

Immunogen:	This NAPB antibody is generated from rabbits immunized with a KLH conjugated synthetic peptide between 13-40 amino acids from the N-terminal region of human NAPB.
Isotype:	Ig Fraction
Purification:	This antibody is purified through a protein A column, followed by peptide affinity purification.

Target Details

Target:	NAPB
Alternative Name:	NAPB (NAPB Products)
Background:	NAPB is required for vesicular transport between the endoplasmic reticulum and the Golgi apparatus (By similarity).

Target Details

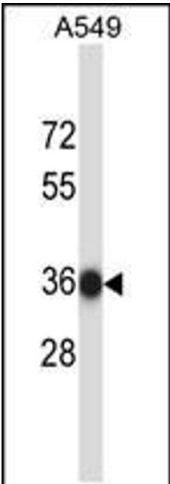
Molecular Weight:	34 kDa
Gene ID:	63908
UniProt:	Q9H115
Pathways:	Synaptic Vesicle Exocytosis

Application Details

Application Notes:	For WB starting dilution is: 1:1000
Restrictions:	For Research Use only

Handling

Format:	Liquid
Concentration:	0.5 mg/mL
Buffer:	Supplied in PBS with 0.09 % (W/V) sodium azide.
Preservative:	Sodium azide
Precaution of Use:	This product contains Sodium azide: a POISONOUS AND HAZARDOUS SUBSTANCE which should be handled by trained staff only.
Storage:	4 °C,-20 °C
Storage Comment:	Store at 4°C for three months and -20°C, stable for up to one year. As with all antibodies care should be taken to avoid repeated freeze thaw cycles. Antibodies should not be exposed to prolonged high temperatures.



Western Blotting

Image 1. Western blot analysis in A549 cell line lysates (35ug/lane).