

Datasheet for ABIN5538686
anti-MARCH1 antibody (AA 163-191)



[Go to Product page](#)

1 Image

Overview

Quantity:	400 µL
Target:	MARCH1
Binding Specificity:	AA 163-191
Reactivity:	Mouse
Host:	Rabbit
Clonality:	Polyclonal
Conjugate:	This MARCH1 antibody is un-conjugated
Application:	Western Blotting (WB)

Product Details

Immunogen:	This MARCH1 antibody is generated from rabbits immunized with a KLH conjugated synthetic peptide between 163-191 amino acids from the Central region of human MARCH1.
Isotype:	Ig Fraction
Purification:	This antibody is purified through a protein A column, followed by peptide affinity purification.

Target Details

Target:	MARCH1
Alternative Name:	MARCH1 (MARCH1 Products)
Background:	MARCH1 is a member of the MARCH family of membrane-bound E3 ubiquitin ligases (EC 6.3.2.19). MARCH proteins add ubiquitin (see MIM 191339) to target lysines in substrate proteins, thereby signaling their vesicular transport between membrane compartments.

Target Details

MARCH1 downregulates the surface expression of major histocompatibility complex (MHC) class II molecules (see MIM 142880) and other glycoproteins by directing them to the late endosomal/lysosomal compartment (Bartee et al., 2004 [PubMed 14722266], Thibodeau et al., 2008 [PubMed 18389477], De Gassart et al., 2008 [PubMed 18305173]).

Molecular Weight: 32 kDa

Gene ID: 55016

UniProt: [Q8TCQ1](#)

Application Details

Application Notes: For WB starting dilution is: 1:1000

Restrictions: For Research Use only

Handling

Format: Liquid

Concentration: 0.5 mg/mL

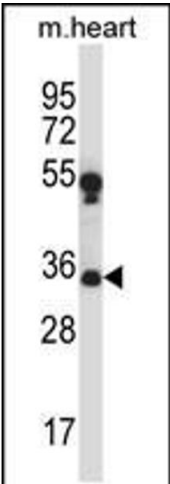
Buffer: Supplied in PBS with 0.09 % (W/V) sodium azide.

Preservative: Sodium azide

Precaution of Use: This product contains Sodium azide: a POISONOUS AND HAZARDOUS SUBSTANCE which should be handled by trained staff only.

Storage: 4 °C,-20 °C

Storage Comment: Store at 4°C for three months and -20°C, stable for up to one year. As with all antibodies care should be taken to avoid repeated freeze thaw cycles. Antibodies should not be exposed to prolonged high temperatures.



Western Blotting

Image 1. Western blot analysis in mouse heart tissue lysates (35ug/lane).