

Datasheet for ABIN5538734
anti-GTF2E1 antibody (C-Term)

3 Images

[Go to Product page](#)

Overview

Quantity:	400 µL
Target:	GTF2E1
Binding Specificity:	AA 782-811, C-Term
Reactivity:	Human
Host:	Rabbit
Clonality:	Polyclonal
Conjugate:	This GTF2E1 antibody is un-conjugated
Application:	Western Blotting (WB), Immunofluorescence (IF), Immunohistochemistry (Paraffin-embedded Sections) (IHC (p)), Flow Cytometry (FACS)

Product Details

Immunogen:	This FER antibody is generated from rabbits immunized with a KLH conjugated synthetic peptide between 782-811 amino acids from the C-terminal region of human FER.
Isotype:	Ig Fraction
Purification:	This antibody is prepared by Saturated Ammonium Sulfate (SAS) precipitation followed by dialysis

Target Details

Target:	GTF2E1
Alternative Name:	FE (GTF2E1 Products)
Background:	FER is a member of the FPS/FES family of nontransmembrane receptor tyrosine kinases. It

Target Details

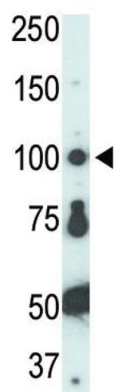
	regulates cell-cell adhesion and mediates signaling from the cell surface to the cytoskeleton via growth factor receptors.
Molecular Weight:	95 kDa
Gene ID:	2241
UniProt:	P16591

Application Details

Application Notes:	For WB starting dilution is: 1:1000
	For IHC-P starting dilution is: 1:10~50
	For IF starting dilution is: 1:10~50
	For FACS starting dilution is: 1:10~50
Restrictions:	For Research Use only

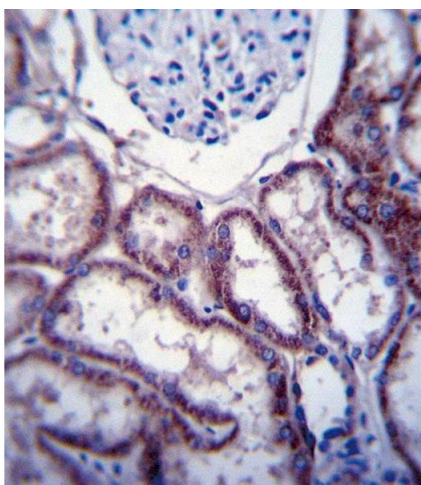
Handling

Format:	Liquid
Concentration:	2 mg/mL
Buffer:	Supplied in PBS with 0.09 % (W/V) sodium azide.
Preservative:	Sodium azide
Precaution of Use:	This product contains Sodium azide: a POISONOUS AND HAZARDOUS SUBSTANCE which should be handled by trained staff only.
Storage:	4 °C,-20 °C
Storage Comment:	Store at 4°C for three months and -20°C, stable for up to one year. As with all antibodies care should be taken to avoid repeated freeze thaw cycles. Antibodies should not be exposed to prolonged high temperatures.



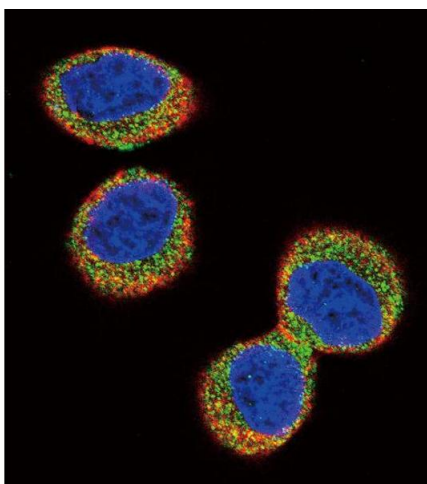
Western Blotting

Image 1. Antibody is used in Western blot to detect FER in HL-60 cell lysate.



Immunohistochemistry

Image 2. FER Antibody immunohistochemistry analysis in formalin fixed and paraffin embedded human kidney tissue followed by peroxidase conjugation of the secondary antibody and DAB staining.



Immunofluorescence

Image 3. Confocal immunofluorescent analysis of FER Antibody with HeLa cell followed by Alexa Fluor 488-conjugated goat anti-rabbit IgG (green). Actin filaments have been labeled with Alexa Fluor 555 phalloidin (red). DAPI was used to stain the cell nuclear (blue).