

Datasheet for ABIN5538750
anti-MPP7 antibody (N-Term)

3 Images



[Go to Product page](#)

Overview

Quantity:	400 µL
Target:	MPP7
Binding Specificity:	AA 2-36, N-Term
Reactivity:	Human
Host:	Rabbit
Clonality:	Polyclonal
Conjugate:	This MPP7 antibody is un-conjugated
Application:	Western Blotting (WB), Immunohistochemistry (Paraffin-embedded Sections) (IHC (p)), Flow Cytometry (FACS)

Product Details

Immunogen:	This MPP7 antibody is generated from a rabbit immunized with a KLH conjugated synthetic peptide between 2-36 amino acids from the N-terminal region of human MPP7.
Isotype:	Ig Fraction
Purification:	This antibody is purified through a protein A column, followed by peptide affinity purification.

Target Details

Target:	MPP7
Alternative Name:	MPP7 (MPP7 Products)
Background:	Acts as an important adapter that promotes epithelial cell polarity and tight junction formation via its interaction with DLG1. Involved in the assembly of protein complexes at sites of cell-cell

Target Details

contact.

Molecular Weight: 66 kDa

Gene ID: 143098

UniProt: [Q5T2T1](#)

Pathways: [Cell-Cell Junction Organization](#)

Application Details

Application Notes: For IHC-P starting dilution is: 1:25

For FACS starting dilution is: 1:25

For WB starting dilution is: 1:1000

Restrictions: For Research Use only

Handling

Format: Liquid

Concentration: 0.5 mg/mL

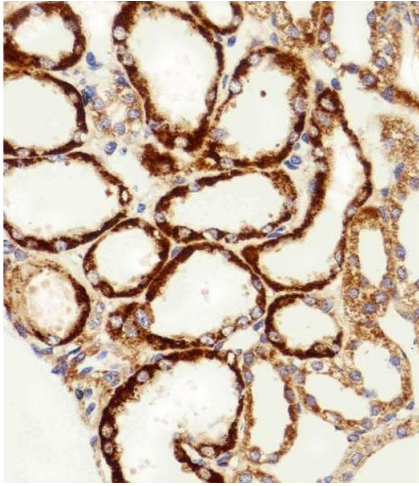
Buffer: Supplied in PBS with 0.09 % (W/V) sodium azide.

Preservative: Sodium azide

Precaution of Use: This product contains Sodium azide: a POISONOUS AND HAZARDOUS SUBSTANCE which should be handled by trained staff only.

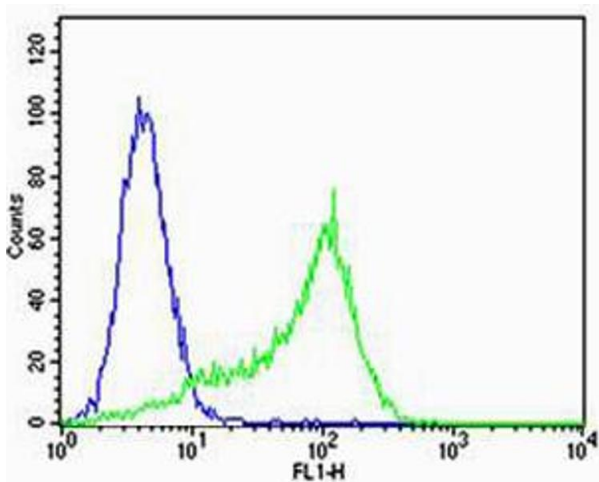
Storage: 4 °C, -20 °C

Storage Comment: Store at 4°C for three months and -20°C, stable for up to one year. As with all antibodies care should be taken to avoid repeated freeze thaw cycles. Antibodies should not be exposed to prolonged high temperatures.



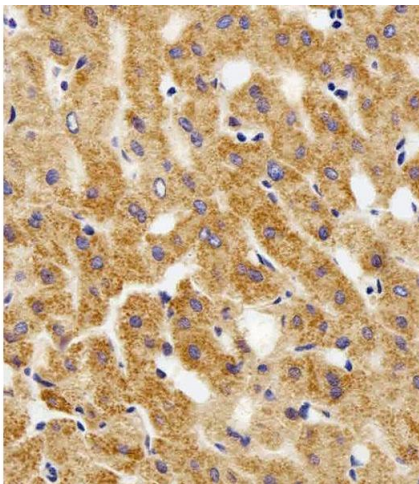
Immunohistochemistry

Image 1. Immunohistochemical analysis of paraffin-embedded H. kidney section using MPP7 Antibody (N-term). Antibody was diluted at 1:100 dilution. A peroxidase-conjugated goat anti-rabbit IgG at 1:400 dilution was used as the secondary antibody, followed by DAB staining.



Flow Cytometry

Image 2. Flow cytometric analysis of HeLa cells using MPP7 Antibody (N-term)(green) compared to an isotype control of rabbit IgG(blue). Antibody was diluted at 1:25 dilution. An Alexa Fluor 488 goat anti-rabbit IgG at 1:400 dilution was used as the secondary antibody.



Immunohistochemistry

Image 3. Immunohistochemical analysis of paraffin-embedded H. liver section using MPP7 Antibody (N-term). Antibody was diluted at 1:100 dilution. A peroxidase-conjugated goat anti-rabbit IgG at 1:400 dilution was used as the secondary antibody, followed by DAB staining.