

Datasheet for ABIN5538765
anti-SH3PXD2A antibody (N-Term)



[Go to Product page](#)

1 Image

Overview

Quantity:	400 µL
Target:	SH3PXD2A
Binding Specificity:	AA 222-250, N-Term
Reactivity:	Human
Host:	Rabbit
Clonality:	Polyclonal
Conjugate:	This SH3PXD2A antibody is un-conjugated
Application:	Western Blotting (WB)

Product Details

Immunogen:	This SH3PXD2A antibody is generated from rabbits immunized with a KLH conjugated synthetic peptide between 222-250 amino acids from the N-terminal region of human SH3PXD2A.
Isotype:	Ig Fraction
Purification:	This antibody is purified through a protein A column, followed by peptide affinity purification.

Target Details

Target:	SH3PXD2A
Alternative Name:	SH3PXD2A (SH3PXD2A Products)
Background:	SH3PXD2A is required for podosome formation, degradation of the extracellular matrix, and for the invasiveness of some cancer cells. Binds phosphatidylinositol 3-phosphate (PtdIns(3)P) and

Target Details

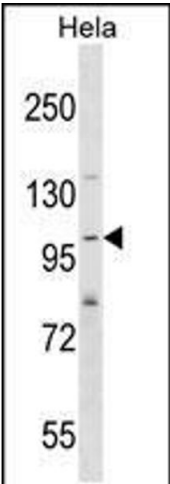
	phosphatidylinositol 3,4-biphosphate (PtdIns(3,4)P2). In association with ADAM12, mediates the neurotoxic effect of beta-amyloid peptide.
Molecular Weight:	125 kDa
Gene ID:	9644
UniProt:	Q5TCZ1

Application Details

Application Notes:	For WB starting dilution is: 1:1000
Restrictions:	For Research Use only

Handling

Format:	Liquid
Concentration:	0.5 mg/mL
Buffer:	Supplied in PBS with 0.09 % (W/V) sodium azide.
Preservative:	Sodium azide
Precaution of Use:	This product contains Sodium azide: a POISONOUS AND HAZARDOUS SUBSTANCE which should be handled by trained staff only.
Storage:	4 °C,-20 °C
Storage Comment:	Store at 4°C for three months and -20°C, stable for up to one year. As with all antibodies care should be taken to avoid repeated freeze thaw cycles. Antibodies should not be exposed to prolonged high temperatures.



Western Blotting

Image 1. Western blot analysis in Hela cell line lysates (35ug/lane).