

Datasheet for ABIN5538803  
**anti-POTEE antibody (AA 380-409)**



[Go to Product page](#)

2 Images

### Overview

Quantity:	400 µL
Target:	POTEE
Binding Specificity:	AA 380-409
Reactivity:	Human
Host:	Rabbit
Clonality:	Polyclonal
Conjugate:	This POTEE antibody is un-conjugated
Application:	Western Blotting (WB), Flow Cytometry (FACS)

### Product Details

Immunogen:	This POTEE antibody is generated from rabbits immunized with a KLH conjugated synthetic peptide between 380-409 amino acids from the Central region of human POTEE.
Isotype:	Ig Fraction
Purification:	This antibody is purified through a protein A column, followed by peptide affinity purification.

### Target Details

Target:	POTEE
Alternative Name:	POTEE ( <a href="#">POTEE Products</a> )
Molecular Weight:	121 kDa
Gene ID:	445582

## Target Details

UniProt: [Q6S8J3](#)

## Application Details

Application Notes: For WB starting dilution is: 1:1000

For FACS starting dilution is: 1:10~50

Restrictions: For Research Use only

## Handling

Format: Liquid

Concentration: 0.5 mg/mL

Buffer: Supplied in PBS with 0.09 % (W/V) sodium azide.

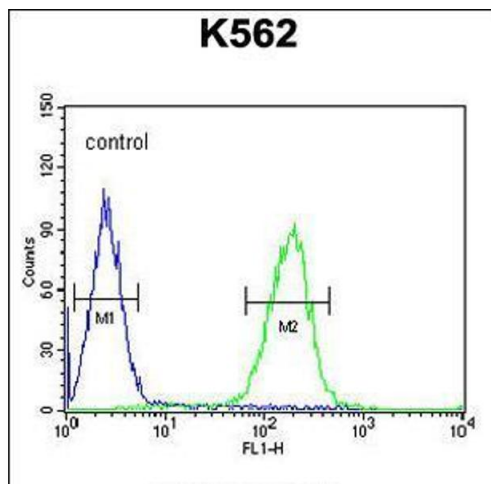
Preservative: Sodium azide

Precaution of Use: This product contains Sodium azide: a POISONOUS AND HAZARDOUS SUBSTANCE which should be handled by trained staff only.

Storage: 4 °C,-20 °C

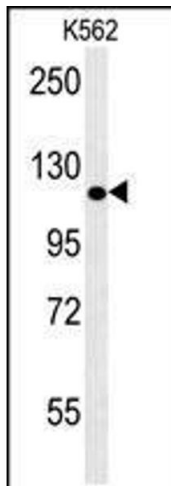
Storage Comment: Store at 4°C for three months and -20°C, stable for up to one year. As with all antibodies care should be taken to avoid repeated freeze thaw cycles. Antibodies should not be exposed to prolonged high temperatures.

## Images



### Flow Cytometry

**Image 1.** Flow cytometric analysis of K562 cells (right histogram) compared to a negative control cell (left histogram). FITC-conjugated goat-anti-rabbit secondary antibodies were used for the analysis.



### Western Blotting

**Image 2.** Western blot analysis in K562 cell line lysates (35ug/lane).