



Datasheet for ABIN5538811
anti-SLC30A10 antibody (C-Term)



[Go to Product page](#)

3 Images

Overview

Quantity:	400 µL
Target:	SLC30A10
Binding Specificity:	AA 331-359, C-Term
Reactivity:	Human
Host:	Rabbit
Clonality:	Polyclonal
Conjugate:	This SLC30A10 antibody is un-conjugated
Application:	Western Blotting (WB)

Product Details

Immunogen:	This SLC30A10 antibody is generated from rabbits immunized with a KLH conjugated synthetic peptide between 331-359 amino acids from the C-terminal region of human SLC30A10.
Isotype:	Ig Fraction
Purification:	This antibody is purified through a protein A column, followed by peptide affinity purification.

Target Details

Target:	SLC30A10
Alternative Name:	SLC30A10 (SLC30A10 Products)
Background:	Zinc functions as a cofactor for numerous enzymes, nuclear factors, and hormones and as an intra- and intercellular signal ion. Members of the zinc transporter (ZNT)/SLC30 subfamily of the cation diffusion facilitator family, such as SLC30A10, permit cellular efflux of zinc (Seve et

Target Details

al., 2004 [PubMed 15154973]).

Molecular Weight: 53 kDa

Gene ID: 55532

UniProt: [Q6XR72](#)

Application Details

Application Notes: For WB starting dilution is: 1:2000

Restrictions: For Research Use only

Handling

Format: Liquid

Concentration: 0.5 mg/mL

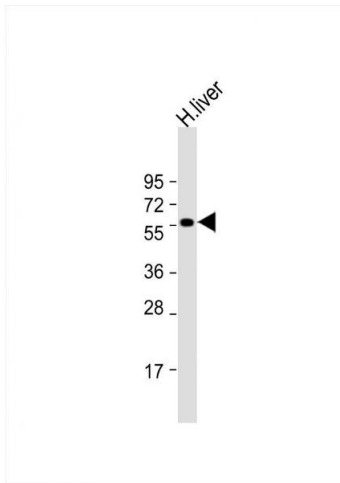
Buffer: Supplied in PBS with 0.09 % (W/V) sodium azide.

Preservative: Sodium azide

Precaution of Use: This product contains Sodium azide: a POISONOUS AND HAZARDOUS SUBSTANCE which should be handled by trained staff only.

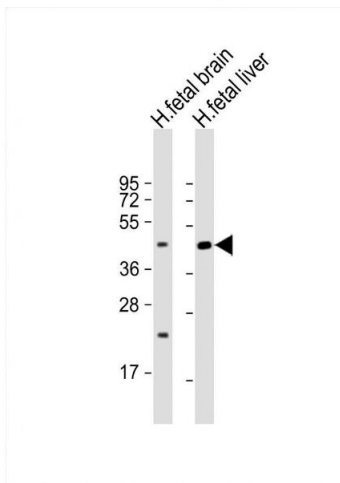
Storage: 4 °C,-20 °C

Storage Comment: Store at 4°C for three months and -20°C, stable for up to one year. As with all antibodies care should be taken to avoid repeated freeze thaw cycles. Antibodies should not be exposed to prolonged high temperatures.



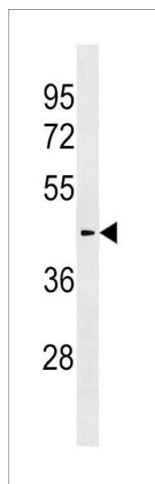
Western Blotting

Image 1. Western Blot at 1:2000 dilution + human liver lysate Lysates/proteins at 20 ug per lane.



Western Blotting

Image 2. Western Blot at 1:2000 dilution Lane 1: human fetal brain lysate Lane 2: human fetal liver lysate Lysates/proteins at 20 ug per lane.



Western Blotting

Image 3. Western blot analysis in ZR-75-1 cell line lysates (35ug/lane).