



[Go to Product page](#)

Datasheet for ABIN5538832
anti-SYS1 antibody (C-Term)

1 Image

Overview

Quantity:	400 µL
Target:	SYS1
Binding Specificity:	AA 125-153, C-Term
Reactivity:	Human
Host:	Rabbit
Clonality:	Polyclonal
Conjugate:	This SYS1 antibody is un-conjugated
Application:	Western Blotting (WB)

Product Details

Immunogen:	This SYS1 antibody is generated from rabbits immunized with a KLH conjugated synthetic peptide between 125-153 amino acids from the C-terminal region of human SYS1.
Isotype:	Ig Fraction
Purification:	This antibody is purified through a protein A column, followed by peptide affinity purification.

Target Details

Target:	SYS1
Alternative Name:	SYS1 (SYS1 Products)
Background:	SYS1 forms a complex with ADP-ribosylation factor-related protein ARFRP1 (MIM 604699) and targets ARFRP1 to the Golgi apparatus (Behnia et al., 2004 [PubMed 15077113]).[supplied by OMIM].

Target Details

Molecular Weight: 18 kDa

Gene ID: 90196

UniProt: [Q8N2H4](#)

Application Details

Application Notes: For WB starting dilution is: 1:1000

Restrictions: For Research Use only

Handling

Format: Liquid

Concentration: 0.45 mg/mL

Buffer: Supplied in PBS with 0.09 % (W/V) sodium azide.

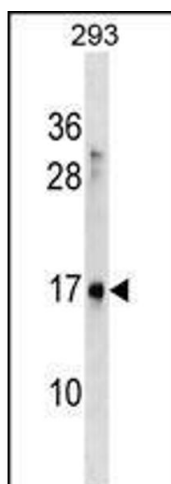
Preservative: Sodium azide

Precaution of Use: This product contains Sodium azide: a POISONOUS AND HAZARDOUS SUBSTANCE which should be handled by trained staff only.

Storage: 4 °C, -20 °C

Storage Comment: Store at 4°C for three months and -20°C, stable for up to one year. As with all antibodies care should be taken to avoid repeated freeze thaw cycles. Antibodies should not be exposed to prolonged high temperatures.

Images



Western Blotting

Image 1. Western blot analysis in 293 cell line lysates (35ug/lane).