

Datasheet for ABIN5538837  
**anti-MTG1 antibody (AA 116-143)**[Go to Product page](#)

## 1 Image

## Overview

Quantity:	400 µL
Target:	MTG1
Binding Specificity:	AA 116-143
Reactivity:	Human
Host:	Rabbit
Clonality:	Polyclonal
Conjugate:	This MTG1 antibody is un-conjugated
Application:	Western Blotting (WB)

## Product Details

Immunogen:	This MTG1 antibody is generated from rabbits immunized with a KLH conjugated synthetic peptide between 116-143 amino acids from the Central region of human MTG1.
Isotype:	Ig Fraction
Purification:	This antibody is purified through a protein A column, followed by peptide affinity purification.

## Target Details

Target:	MTG1
Alternative Name:	MTG1 ( <a href="#">MTG1 Products</a> )
Background:	Mitochondrial GTPase.MTG1 may be involved in assembly of the large ribosomal subunit (By similarity).

## Target Details

Molecular Weight:	37 kDa
Gene ID:	92170
UniProt:	<a href="#">Q9BT17</a>

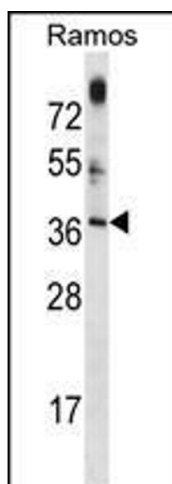
## Application Details

Application Notes:	For WB starting dilution is: 1:1000
Restrictions:	For Research Use only

## Handling

Format:	Liquid
Concentration:	0.5 mg/mL
Buffer:	Supplied in PBS with 0.09 % (W/V) sodium azide.
Preservative:	Sodium azide
Precaution of Use:	This product contains Sodium azide: a POISONOUS AND HAZARDOUS SUBSTANCE which should be handled by trained staff only.
Storage:	4 °C, -20 °C
Storage Comment:	Store at 4°C for three months and -20°C, stable for up to one year. As with all antibodies care should be taken to avoid repeated freeze thaw cycles. Antibodies should not be exposed to prolonged high temperatures.

## Images



### Western Blotting

**Image 1.** Western blot analysis in Ramos cell line lysates (35ug/lane).