

Datasheet for ABIN5538846
anti-GXYLT1 antibody (C-Term)[Go to Product page](#)

1 Image

Overview

Quantity:	400 µL
Target:	GXYLT1
Binding Specificity:	AA 411-440, C-Term
Reactivity:	Human
Host:	Rabbit
Clonality:	Polyclonal
Conjugate:	This GXYLT1 antibody is un-conjugated
Application:	Western Blotting (WB)

Product Details

Immunogen:	This GLT8D3 antibody is generated from rabbits immunized with a KLH conjugated synthetic peptide between 411-440 amino acids from the C-terminal region of human GLT8D3.
Isotype:	Ig Fraction
Purification:	This antibody is purified through a protein A column, followed by peptide affinity purification.

Target Details

Target:	GXYLT1
Alternative Name:	GLT8D3 (GXYLT1 Products)
Background:	GXYLT1 is a xylosyltransferase (EC 2.4.2.-) that adds the first xylose to O-glucose-modified residues in the epidermal growth factor (EGF, MIM 131530) repeats of proteins such as NOTCH1 (MIM 190198) (Sethi et al., 2010 [PubMed 19940119]).

Target Details

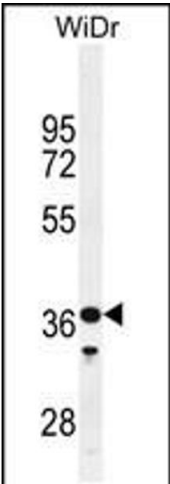
Molecular Weight:	51 kDa
Gene ID:	283464
UniProt:	Q4G148
Pathways:	Glycosaminoglycan Metabolic Process

Application Details

Application Notes:	For WB starting dilution is: 1:1000
Restrictions:	For Research Use only

Handling

Format:	Liquid
Concentration:	0.4 mg/mL
Buffer:	Supplied in PBS with 0.09 % (W/V) sodium azide.
Preservative:	Sodium azide
Precaution of Use:	This product contains Sodium azide: a POISONOUS AND HAZARDOUS SUBSTANCE which should be handled by trained staff only.
Storage:	4 °C,-20 °C
Storage Comment:	Store at 4°C for three months and -20°C, stable for up to one year. As with all antibodies care should be taken to avoid repeated freeze thaw cycles. Antibodies should not be exposed to prolonged high temperatures.



Western Blotting

Image 1. Western blot analysis in WiDr cell line lysates (35ug/lane).