

Datasheet for ABIN5538868  
**anti-FCGR1B antibody (C-Term)**[Go to Product page](#)

## 3 Images

## Overview

Quantity:	400 µL
Target:	FCGR1B
Binding Specificity:	AA 248-276, C-Term
Reactivity:	Human
Host:	Rabbit
Clonality:	Polyclonal
Conjugate:	This FCGR1B antibody is un-conjugated
Application:	Western Blotting (WB), Flow Cytometry (FACS), Immunohistochemistry (Paraffin-embedded Sections) (IHC (p))

## Product Details

Immunogen:	This FCGR1B antibody is generated from rabbits immunized with a KLH conjugated synthetic peptide between 248-276 amino acids from the C-terminal region of human FCGR1B.
Isotype:	Ig Fraction
Purification:	This antibody is purified through a protein A column, followed by peptide affinity purification.

## Target Details

Target:	FCGR1B
Alternative Name:	FCGR1B ( <a href="#">FCGR1B Products</a> )
Background:	FCGR1B may bind to the Fc region of immunoglobulins gamma with a low affinity compared to FCGR1A. This protein may function in the humoral immune response.

## Target Details

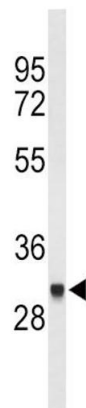
Molecular Weight:	32 kDa
Gene ID:	2210
UniProt:	<a href="#">Q92637</a>

## Application Details

Application Notes:	For WB starting dilution is: 1:1000
	For IHC-P starting dilution is: 1:10~50
	For FACS starting dilution is: 1:10~50
Restrictions:	For Research Use only

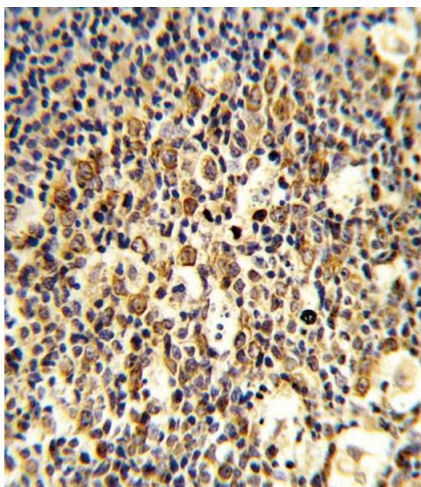
## Handling

Format:	Liquid
Buffer:	Supplied in PBS with 0.09 % (W/V) sodium azide.
Preservative:	Sodium azide
Precaution of Use:	This product contains Sodium azide: a POISONOUS AND HAZARDOUS SUBSTANCE which should be handled by trained staff only.
Storage:	4 °C,-20 °C
Storage Comment:	Store at 4°C for three months and -20°C, stable for up to one year. As with all antibodies care should be taken to avoid repeated freeze thaw cycles. Antibodies should not be exposed to prolonged high temperatures.



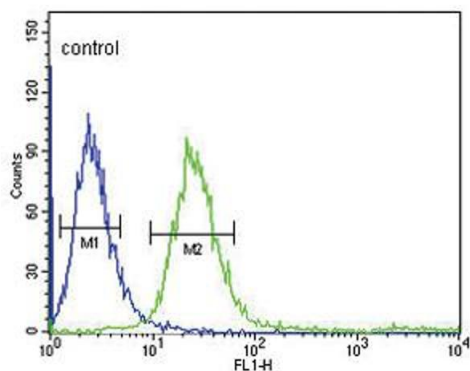
### Western Blotting

**Image 1.** Western blot analysis of FCGR1B Antibody in CEM cell line lysates (35ug/lane)



### Immunohistochemistry

**Image 2.** Formalin-fixed and paraffin-embedded human tonsil reacted with FCGR1B Antibody , which was peroxidase-conjugated to the secondary antibody, followed by DAB staining.



### Flow Cytometry

**Image 3.** Flow cytometric analysis of CEM cells (right histogram) compared to a negative control cell (left histogram).FITC-conjugated goat-anti-rabbit secondary antibodies were used for the analysis.