

Datasheet for ABIN5538958
anti-PLD6 antibody (AA 125-154)

3 Images

[Go to Product page](#)

Overview

Quantity:	400 µL
Target:	PLD6
Binding Specificity:	AA 125-154
Reactivity:	Human, Mouse
Host:	Rabbit
Clonality:	Polyclonal
Conjugate:	This PLD6 antibody is un-conjugated
Application:	Western Blotting (WB)

Product Details

Immunogen:	This PLD6 antibody is generated from rabbits immunized with a KLH conjugated synthetic peptide between 125-154 amino acids from the Central region of human PLD6.
Isotype:	Ig Fraction
Purification:	This antibody is purified through a protein A column, followed by peptide affinity purification.

Target Details

Target:	PLD6
Alternative Name:	PLD6 (PLD6 Products)
Molecular Weight:	28 kDa
Gene ID:	201164

Target Details

UniProt: [Q8N2A8](#)

Pathways: [Ribonucleoprotein Complex Subunit Organization](#)

Application Details

Application Notes: For WB starting dilution is: 1:2000

Restrictions: For Research Use only

Handling

Format: Liquid

Concentration: 0.5 mg/mL

Buffer: Supplied in PBS with 0.09 % (W/V) sodium azide.

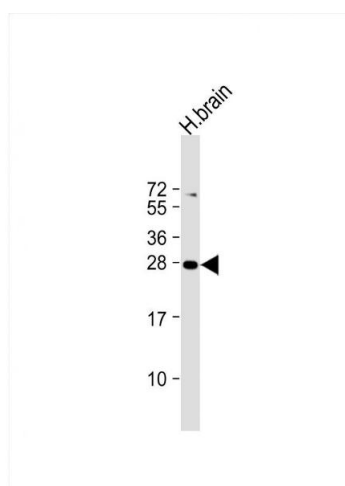
Preservative: Sodium azide

Precaution of Use: This product contains Sodium azide: a POISONOUS AND HAZARDOUS SUBSTANCE which should be handled by trained staff only.

Storage: 4 °C, -20 °C

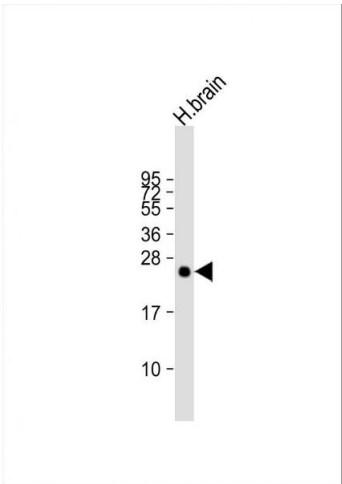
Storage Comment: Store at 4°C for three months and -20°C, stable for up to one year. As with all antibodies care should be taken to avoid repeated freeze thaw cycles. Antibodies should not be exposed to prolonged high temperatures.

Images



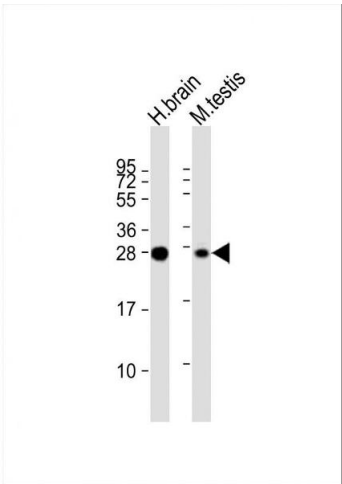
Western Blotting

Image 1. Western Blot at 1:2000 dilution + human brain lysate Lysates/proteins at 20 ug per lane.



Western Blotting

Image 2. Western Blot at 1:2000 dilution + human brain lysate Lysates/proteins at 20 ug per lane.



Western Blotting

Image 3. Western Blot at 1:2000 dilution Lane 1: human brain lysate Lane 2: mouse testis lysate Lysates/proteins at 20 ug per lane.