

Datasheet for ABIN5538961  
**anti-WDR52 antibody (C-Term)**

## 3 Images

[Go to Product page](#)

## Overview

Quantity:	400 µL
Target:	WDR52
Binding Specificity:	AA 768-797, C-Term
Reactivity:	Human
Host:	Rabbit
Clonality:	Polyclonal
Conjugate:	This WDR52 antibody is un-conjugated
Application:	Western Blotting (WB), Immunofluorescence (IF), Flow Cytometry (FACS), Immunohistochemistry (Paraffin-embedded Sections) (IHC (p))

## Product Details

Immunogen:	This WDR52 antibody is generated from rabbits immunized with a KLH conjugated synthetic peptide between 768-797 amino acids from the C-terminal region of human WDR52.
Isotype:	Ig Fraction
Purification:	This antibody is purified through a protein A column, followed by peptide affinity purification.

## Target Details

Target:	WDR52
Alternative Name:	WDR52 ( <a href="#">WDR52 Products</a> )
Background:	The specific function of the protein remains unknown.

## Target Details

Molecular Weight:	112 kDa
Gene ID:	55779
UniProt:	<a href="#">Q96MT7</a>

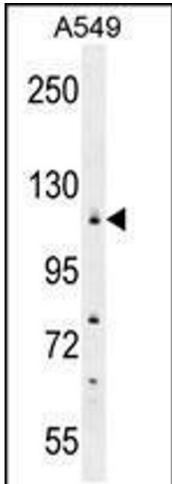
## Application Details

Application Notes:	For WB starting dilution is: 1:1000
	For IHC-P starting dilution is: 1:50~100
	For IF starting dilution is: 1:10~50
	For FACS starting dilution is: 1:10~50

Restrictions:	For Research Use only
---------------	-----------------------

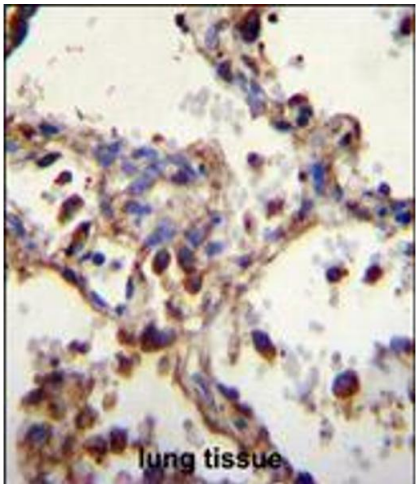
## Handling

Format:	Liquid
Concentration:	0.34 mg/mL
Buffer:	Supplied in PBS with 0.09 % (W/V) sodium azide.
Preservative:	Sodium azide
Precaution of Use:	This product contains Sodium azide: a POISONOUS AND HAZARDOUS SUBSTANCE which should be handled by trained staff only.
Storage:	4 °C,-20 °C
Storage Comment:	Store at 4°C for three months and -20°C, stable for up to one year. As with all antibodies care should be taken to avoid repeated freeze thaw cycles. Antibodies should not be exposed to prolonged high temperatures.



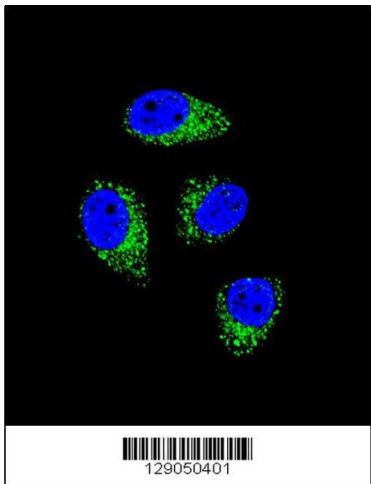
Western Blotting

**Image 1.** Western blot analysis in A549 cell line lysates (35ug/lane).



Immunohistochemistry

**Image 2.** WDR52 Antibody immunohistochemistry analysis in formalin fixed and paraffin embedded human lung tissue followed by peroxidase conjugation of the secondary antibody and DAB staining.



Immunofluorescence

**Image 3.** Confocal immunofluorescent analysis of WDR52 Antibody with A549 cell followed by Alexa Fluor 488-conjugated goat anti-rabbit IgG (green). DAPI was used to stain the cell nuclear (blue).