



Datasheet for ABIN5539037
anti-C17orf59 antibody (AA 186-215)



[Go to Product page](#)

2 Images

Overview

Quantity:	400 µL
Target:	C17orf59 (C17ORF59)
Binding Specificity:	AA 186-215
Reactivity:	Human, Mouse
Host:	Rabbit
Clonality:	Polyclonal
Conjugate:	This C17orf59 antibody is un-conjugated
Application:	Western Blotting (WB)

Product Details

Immunogen:	This C17orf59 antibody is generated from rabbits immunized with a KLH conjugated synthetic peptide between 186-215 amino acids from the Central region of human C17orf59.
Isotype:	Ig Fraction
Purification:	This antibody is purified through a protein A column, followed by peptide affinity purification.

Target Details

Target:	C17orf59 (C17ORF59)
Alternative Name:	C17orf59 (C17ORF59 Products)
Molecular Weight:	37 kDa
Gene ID:	54785

Target Details

UniProt: [Q96GS4](#)

Application Details

Application Notes: For WB starting dilution is: 1:1000

Restrictions: For Research Use only

Handling

Format: Liquid

Concentration: 0.5 mg/mL

Buffer: Supplied in PBS with 0.09 % (W/V) sodium azide.

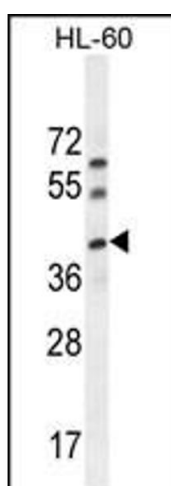
Preservative: Sodium azide

Precaution of Use: This product contains Sodium azide: a POISONOUS AND HAZARDOUS SUBSTANCE which should be handled by trained staff only.

Storage: 4 °C, -20 °C

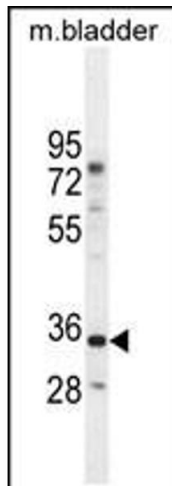
Storage Comment: Store at 4°C for three months and -20°C, stable for up to one year. As with all antibodies care should be taken to avoid repeated freeze thaw cycles. Antibodies should not be exposed to prolonged high temperatures.

Images



Western Blotting

Image 1. Western blot analysis in HL-60 cell line lysates (35ug/lane).



Western Blotting

Image 2. Western blot analysis in mouse bladder tissue lysates (35ug/lane).