

Datasheet for ABIN5539040
anti-MAGEB10 antibody (AA 88-116)[Go to Product page](#)

1 Image

Overview

Quantity:	400 µL
Target:	MAGEB10
Binding Specificity:	AA 88-116
Reactivity:	Human
Host:	Rabbit
Clonality:	Polyclonal
Conjugate:	This MAGEB10 antibody is un-conjugated
Application:	Western Blotting (WB)

Product Details

Immunogen:	This MAGEB10 antibody is generated from rabbits immunized with a KLH conjugated synthetic peptide between 88-116 amino acids from the Central region of human MAGEB10.
Isotype:	Ig Fraction
Purification:	This antibody is purified through a protein A column, followed by peptide affinity purification.

Target Details

Target:	MAGEB10
Alternative Name:	MAGEB10 (MAGEB10 Products)
Background:	This gene encodes a member of the B subfamily of the melanoma associated antigen protein family. The encoded protein is specifically expressed in testis and tumor cells. [provided by RefSeq].

Target Details

Molecular Weight:	39 kDa
Gene ID:	139422
UniProt:	Q96LZ2

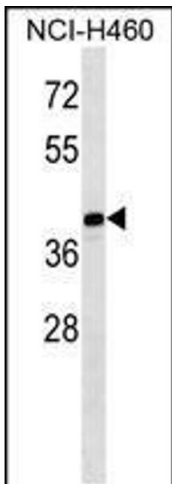
Application Details

Application Notes:	For WB starting dilution is: 1:1000
Restrictions:	For Research Use only

Handling

Format:	Liquid
Concentration:	0.5 mg/mL
Buffer:	Supplied in PBS with 0.09 % (W/V) sodium azide.
Preservative:	Sodium azide
Precaution of Use:	This product contains Sodium azide: a POISONOUS AND HAZARDOUS SUBSTANCE which should be handled by trained staff only.
Storage:	4 °C, -20 °C
Storage Comment:	Store at 4°C for three months and -20°C, stable for up to one year. As with all antibodies care should be taken to avoid repeated freeze thaw cycles. Antibodies should not be exposed to prolonged high temperatures.

Images



Western Blotting

Image 1. Western blot analysis in NCI-H460 cell line lysates (35ug/lane).