



[Go to Product page](#)

Datasheet for ABIN5539043
anti-C6ORF211 antibody (N-Term)

1 Image

Overview

Quantity:	400 µL
Target:	C6ORF211
Binding Specificity:	AA 29-57, N-Term
Reactivity:	Human
Host:	Rabbit
Clonality:	Polyclonal
Conjugate:	This C6ORF211 antibody is un-conjugated
Application:	Western Blotting (WB)

Product Details

Immunogen:	This C6orf211 antibody is generated from rabbits immunized with a KLH conjugated synthetic peptide between 29-57 amino acids from the N-terminal region of human C6orf211.
Isotype:	Ig Fraction
Purification:	This antibody is purified through a protein A column, followed by peptide affinity purification.

Target Details

Target:	C6ORF211
Alternative Name:	C6orf211 (C6ORF211 Products)
Molecular Weight:	51 kDa
Gene ID:	79624

Target Details

UniProt: [Q9H993](#)

Application Details

Application Notes: For WB starting dilution is: 1:1000

Restrictions: For Research Use only

Handling

Format: Liquid

Concentration: 0.35 mg/mL

Buffer: Supplied in PBS with 0.09 % (W/V) sodium azide.

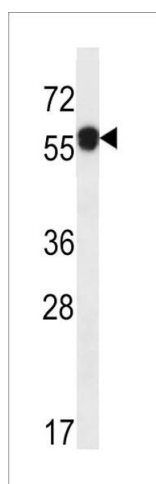
Preservative: Sodium azide

Precaution of Use: This product contains Sodium azide: a POISONOUS AND HAZARDOUS SUBSTANCE which should be handled by trained staff only.

Storage: 4 °C, -20 °C

Storage Comment: Store at 4°C for three months and -20°C, stable for up to one year. As with all antibodies care should be taken to avoid repeated freeze thaw cycles. Antibodies should not be exposed to prolonged high temperatures.

Images



Western Blotting

Image 1. Western blot analysis in ZR-75-1 cell line lysates (35ug/lane).